

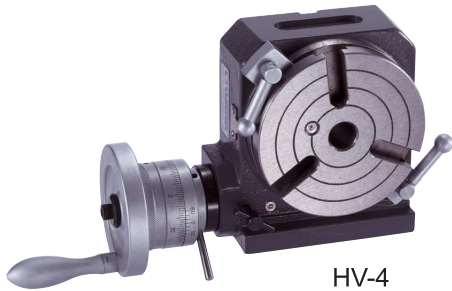


Horizontal / Vertical Rotary Table

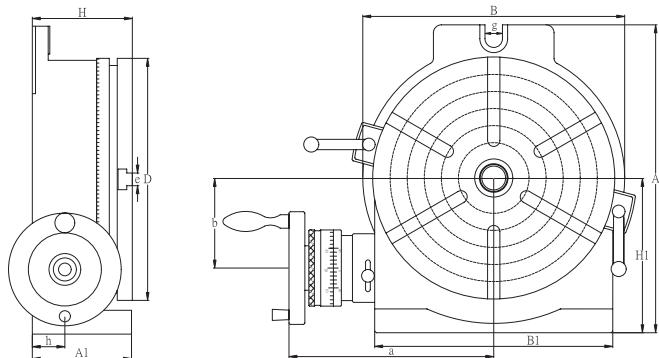


HV-6, 8, 10, 12, 14, 16

Special Accessories (Details on page 2)



HV-4



Specifications

Unit:mm/inches

ORDER NO.	Table			Base dimension			Width of T-slot		Bolt slots	The Load Capacity For Rotary Table		Center sleeve	Gross Weight kg wooden case(W) Carton(C)	Meas. CFT	CODE NO.
	Outer diameter	Height					e	Type		Horizontal	Vertical				
	A1	D	H	H1	A	B			g						
HV-4	58	110	72	79	138	118	11	⊗	12	35 KGS	18 KGS	MT-2	(C) 7.6kgs	0.3	1001-000
HV-6	74 2.91	150 5.91	80 3.11	102 4.02	205 8.07	167 6.57	11 0.43	⊗	17 0.67	40 KGS	20 KGS	MT-2	(C) 12.7kgs	0.4	1001-001
HV-8	100 3.94	200 7.87	105 4.13	135 5.31	265 10.43	220 8.66	14 0.55	⊗	17 0.67	80 KGS	40 KGS	MT-3	(C) 26.9kgs	0.8	1001-002
HV-10	110 4.33	250 9.84	115 4.53	165 6.50	325 12.80	280 11.02	14 0.55	⊗	17 0.67	90 KGS	50 KGS	MT-3	(C) 37.7kgs	2	1001-003
HV-12	130 5.12	300 11.81	135 5.32	195 7.68	388 15.27	330 12.99	16 0.63	⊗	18 0.71	120 KGS	60 KGS	MT-4	(C) 60.6kgs	2.6	1001-004
HV-14	130 5.12	350 13.78	140 5.51	230 9.06	450 17.72	380 14.95	16 0.63	⊗	18 0.71	130 KGS	70 KGS	MT-4	(C) 79.5kgs	3.2	1001-005
HV-16	150 5.90	406 15.98	155 6.10	255 10.03	500 16.69	430 16.93	16 0.63	⊗	18 0.71	140 KGS	70 KGS	MT-4	(W) 118.4kgs	4.2	1001-006

- Our Tables are made of high density Meehanite and use "HEIDENHAIN" electronic equipment to inspect angle to assure the excellent quality and durability.
- Use excellent machining center to process. Spindle end be applied accuracy bearing. Can be assured to keep very steady under load cutting.
- Worm is hardened and ground. The ratio is 90:1. The work table is graduated a full 360° so that one turn of the handle moves the table through 4°. Micro collar is graduated in steps of 1' min. And vernier scale makes settings down to 10 seconds possible.
- These Rotary Tables are popular for their excellent performance, practical design and reasonable cost. They are widely used for circular cutting work, angle setting, boring, spot-facing and similar work.

Test Report

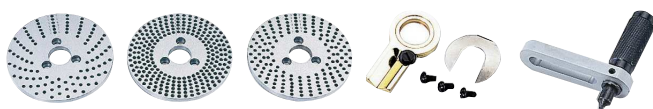
ITEM NO.	TESTING OBJECTIVE	VARIATION (INCHES)(MM) MAXIMUM TESTED	
1	FLATNESS OF CLAMPING SURFACE (CONCAVE)	.0006(0.015)	
2	PARALLELISM OF CLAMPING SURFACE TO BASE	.0008(0.02)	
3	SQUARENESS OF CLAMPING SURFACE TO ANGLE FACE	.0008(0.02)	
4	TRUE RUNNING OF CLAMPING SURFACE	.0006(0.015)	
5	TRUE RUNNING OF CENTER HOLE MEASURED AT HOLE EDGE	.0008(0.02)	
6	INDEXING ACCURACY OF DIRECT INDEXING MECHANISM MAXIMUM CUMULATIVE SPACING ERROR	45"	

A. DIVIDING PLATES

DP-2, 3, 4, 5



DP-1



ORDER NO.	SUIT FOR MODEL	WEIGHT kg	CODE NO.
*DP-1	for HV-4, HV-6, VUT-6, VU-100, 150	1.4	1001-030

*DP set include index plate, crank handle, 3 pcs screw, sector, & U Washer.

1 carton with 1 set. Gross weight: 3.5kgs.

Meas.: 0.13 CFT.

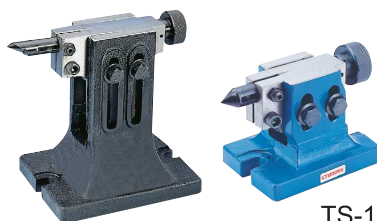
Number of the holes of Dividing Plates

ORDER NO.	SUIT FOR MODEL	WEIGHT kg	CODE NO.
* DP-2	for HV -8, VU-200	4.5	1001-031
DP-3	for HV -10, 12, 14, 16, VUT-10, RT -12	4.6	1001-032
DP-4	for CS-6, 8	4.6	1001-033
DP-5	for VU-300	4.6	1001-034

A-Plate	15, 16, 17, 18, 19, 20
B-Plate	21, 23, 27, 29, 31, 33
C-Plate	37, 39, 41, 43, 47, 49

A-Plate	26, 30, 34, 38, 41, 44, 47, 51, 57 28, 32, 37, 39, 43, 46, 49, 53, 59
B-Plate	61, 67, 71, 77, 81, 87, 91, 97 63, 69, 73, 79, 83, 89, 93, 99

B. TAILSTOCK



TS-1

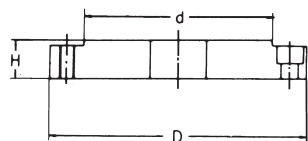
ORDER NO.	adjustable		SUIT FOR MODEL	G.W. kg	Meas. CFT	CODE NO.
	highest	lowest				
TS-1	108	80	HV-4, HV-6, VSI-4, VSI-5, BS-0, VUT-6, VU-100, VU-150	3.9	0.4	1001-022
TS-2	145	115	BS-1, CC-6 CS-6, HV-8	5.5	0.4	1001-023
TS-3	200	130	CS-8, HV-10, HV-12, CC-8, VUT-10, VUT-12, VU-200	8.1	0.4	1001-024
TS-4	260	190	HV-14 HV-16	11.9	0.7	1001-025

Unit:mm

C. FLANGE



FLT-0 For VSC-5F
FLT-1 For VSC-6F
FLT-2 For VSC-7F
FLT-3 For VSC-8F



ORDER NO.	D	d	H	SUIT FOR MODEL	WEIGHT	CODE NO.
FLT-0	138	100	20	RT-HV- 6, 8	1.9	1001-040
FLT-1	170	130	21	RT-HV- 8, 10	3.3	1001-041
FLT-2	195	155	24	RT-HV- 10, 12, 14	5.2	1001-042
FLT-3	210	160	24	RT-HV- 12, 14, 16	4.9	1001-043

Unit:mm

Precision 3-Jaw Scroll Chuck

- Detail specification & Order NO. shown on page E5

Reversible type

For indexer, The fixing hole is from front.



ORDER NO.

VSC-5A SUIT FOR BS-0 OR HV-6, VUT-6, VU-150
VSC-6A SUIT FOR BS-1 OR HV-8, 10, VUT-6, VU-200
VSC-7A, 8A SUIT FOR BS-2 OR HV-10, 12, 14, VUT-10, 12
VSC-10A SUIT FOR HV-14, 16

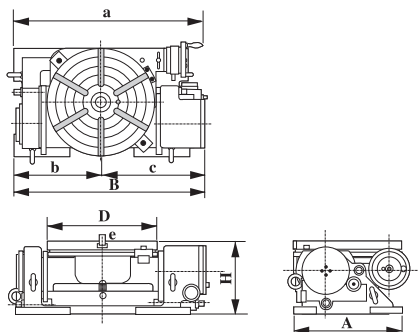
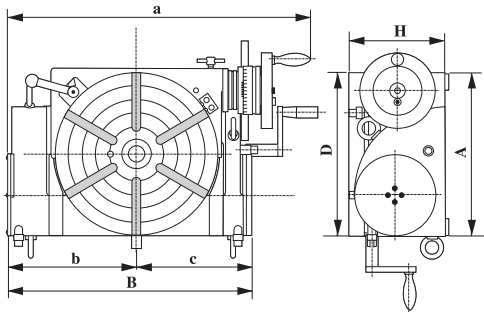
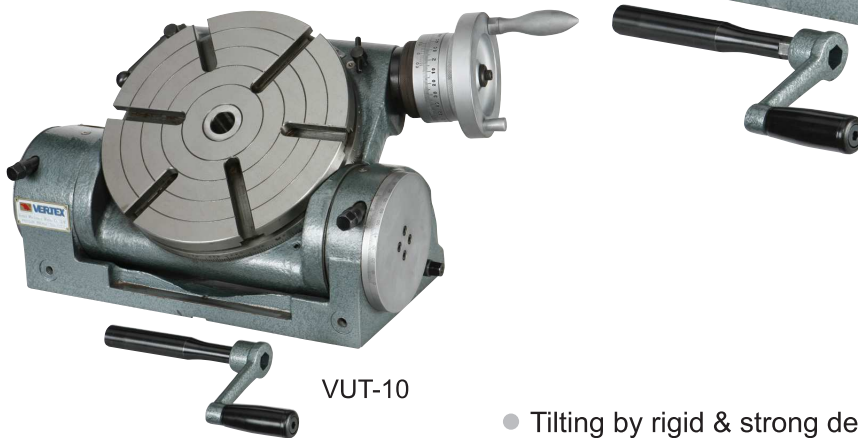
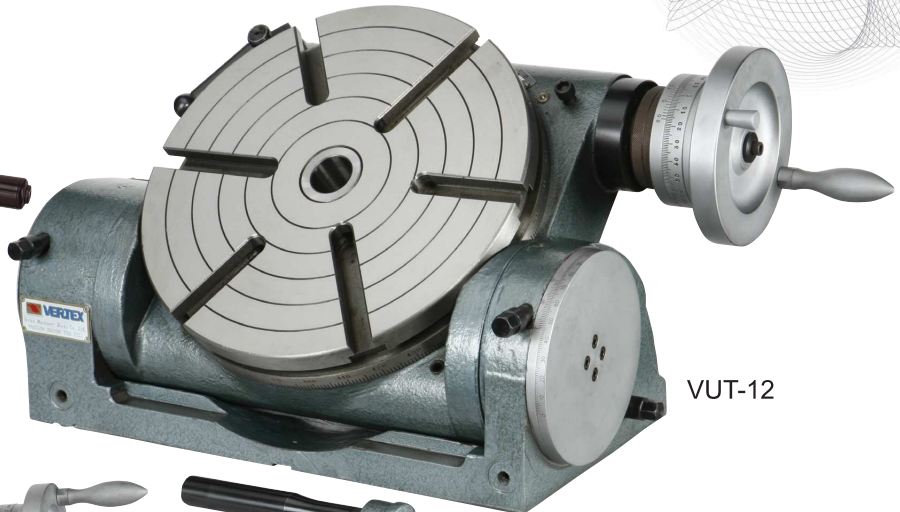
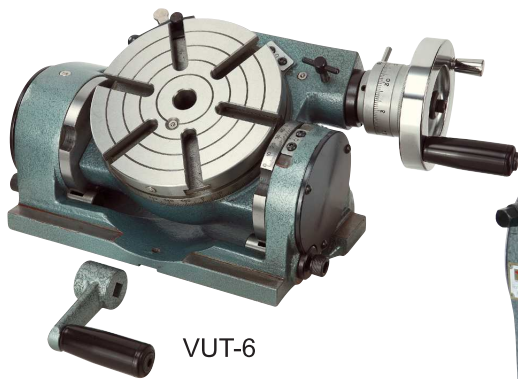


ORDER NO.

VSK-6A SUIT FOR CS-6, CC-6
VSK-8A SUIT FOR CS-8, CC-8
VSK-12A SUIT FOR CC-12

NEW

Heavy Duty Type, Rigid & Strong Design



- Tilting by rigid & strong design, 2 supporter & rigid clamping system construction.
- Minimum set-up time.
- Tilting angle can adjusted by worm & worm gear system.
- Accurate and built for use in milling, boring and other machines.
- Indexing, facing and other operations can be done rapidly with extreme precision.
- Worm shafts are hardened and ground.
- Indexing can be done with optional dividing plates.
- DP-1 for VUT-6, DP-3 for VUT-10, VUT-12.
- Tailstock TS-1 for VUT-6, TS-3 for VUT-10, VUT-12.

MAIN SPECIFICATIONS		VUT-6	VUT-10, VUT-12
TILTING	Degree per one handle rotation	6°	1°
	vernier reading	1'	2'
TABLE	Degree per one handle rotation	4°	4°
	Scale of micro collar	1'	1'
	vernier reading	10"	10"
	Gear ratio	1:90	1:90

Specifications

ORDER NO.	TABLE DIAMETER & TABLE HEIGHT			MOUNTING SURFACE		OVER ALL SIZE			T-SOLT WIDTH	CENTER HOLE	CENTER HEIGHT (Tilted at 90°)	WEIGHT (kg)	CODE NO.
	D	H	h	A	B	a	b	c	e				
VUT-6	150	115	165	180	268	380	143	125	10	MT-2	90	23.5	1001-014
VUT-10	250	155	275	255	397	495	210	187	12	MT-3	150	75.5	1001-015
VUT-12	300	178	319	300	447	551	235	212	14	MT-4	169	108	1001-016



Semi-Universal Dividing Head



VERTEX



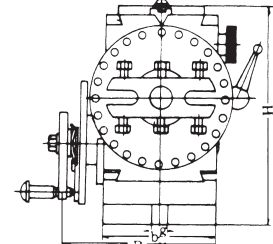
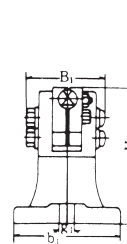
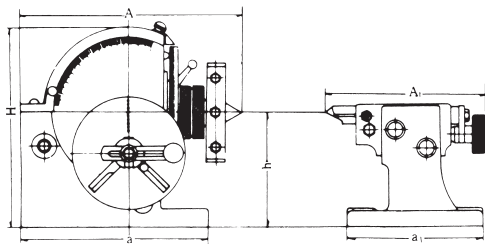
THREAD SPINDLE:
BS-0. 1 1/8 - 12TPI
BS-0. 1 1/2 - 8TPI

ORDER NO.	WEIGHT(kgs)	CODE NO.
BS-0	19	1001-050
BS-1	33.5	1001-051
BS-0-J-5	24	1001-053
BS-1-J-6	42	1001-054

Dividing Plate A, B, C

Plate A	15	16	17	18	19	20
Plate B	21	23	27	29	31	33
Plate C	37	39	41	43	47	49

Standard Accessories



Semi-Universal Index B & S Type No. 0 No. 1 (Head-stock):

Unit:mm/inches.

ORDER NO.	A	B	H	h	a	b	g	TAPER OF CENTER	Diameter of spindle hole
BS-0	189 7 7/16	140 5 23/64	173 6 13/16	100 3 15/16	160 6 19/64	91 3 37/64	13 33/64	MT-2	18
BS-1	293 11 17/32	156 6 9/64	220 8 21/32	128 5 3/4	207 8 5/32	114 4 31/64	16 5/8	MT-3	20

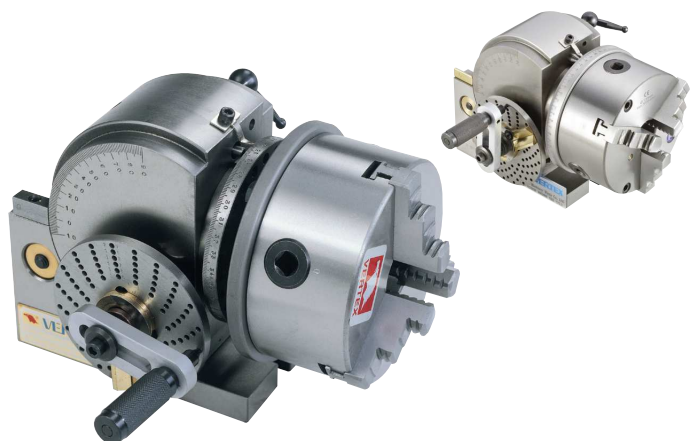
Semi-Universal Index B & S Type No. 0 No. 1 (Tail-Stock):

Unit:mm/inches.

ORDER NO.	A1	B1	H1	h	a1	b1	g1
BS-0	167 6 37/64	80 3 5/32	107.5 4 15/64	100 3 15/16	130 5 1/8	92 3 27/8	13 33/64
BS-1	191 7 33/64	88 3 15/32	137 5 25/64	128 5 3/4	150 5 29/32	108 4 1/4	16 5/8

- Dividing Head can divide in any angle by the direct, in-direct, or different methods. The ratio between the worm and the worm gear is 40:1.
- Hardened and ground spindle is rigidly held in a taper roller bearing. Worm is hardened and ground also.
- The swivel head can be locked of any angle from 10° below horizontal to 90° vertical-precision fitting to base assures smooth rotation.
- All models have threaded spindle nose and 24 hole dividing plate with easy conversion to fast direct indexing on numbers 2, 3, 4, 6, 8, 12, and 24.
- Easy indexing of all numbers from 2 to 50 and many numbers from 52 to 380. Model BS-2 is also equipped for different indexing of all numbers from 2 to 380, and for spiral cutting.
- Accurate precision, little backlash, fine appearance and strong structure so can assure smooth rotation.

NEW MODEL FOR NEXT



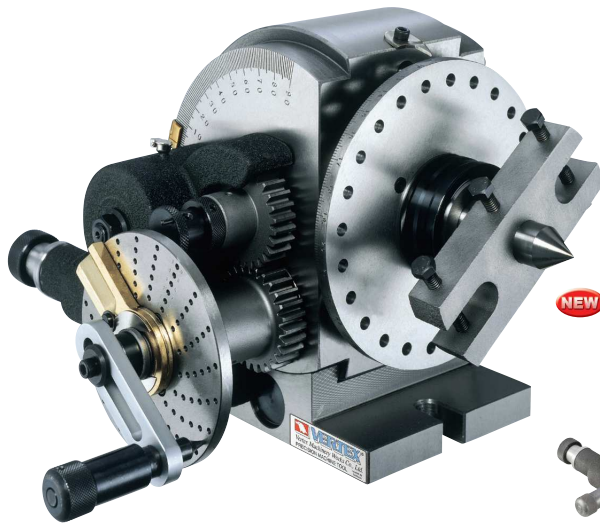
BS-0-J is
BS-0 fitted with 5" 3-Jaw Chuck & Standard
Accessories



Universal Dividing Head



VERTEX®



THREAD SPINDLE: 2 1/4" - 8TPI

NEW MODEL FOR NEXT

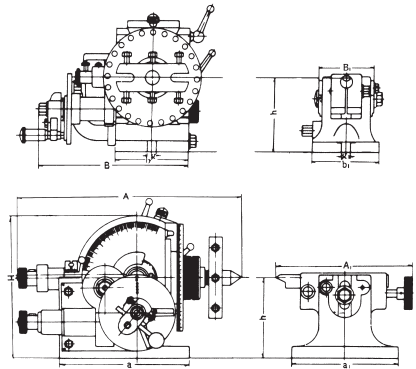


Standard Accessories



BS-2-J IS BS-2 WITH 6" 3 JAW CHUCK & STANDARD ACCESSORIES

NEW MODEL FOR NEXT



BS-2A

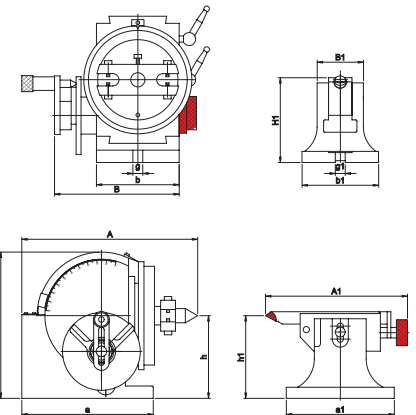
NEW



BS-2A COMES WITH A TAIL STOCK, A SET OF DIVIDING PLATE, A SET OF CARRIER CLAMP, A 3 JAW PLATE, A CENTER

BS-2A BODY STRUCTURE IS SAME AS BS-2 WITHOUT CHANGING GEAR ARBOR OR BRACKET. OTHER ACCESSORIES ARE SAME AS BS-2.

Standard Accessories



Universal Index B & S Type No.2 (Head-stock):

Unit:mm/inches.

ORDER NO.	A	B	H	h	a	b	g	Taper of center	spindle hole
BS-2	365 14 13/32	272 10 45/64	236 9 13/64	132.7 5 15/64	213 5 25/64	134 5 9/32	16 5/8	MT-4	25.4 1
BS-2A	285	202	237	134	213	134	16	MT-4	25.4

BS-2 (Tail-stock)

Unit:mm/inches.

ORDER NO.	A1	B1	H1	h1	a1	b1	g1
BS-2	205~255 8 5/64~10 5/64	86 3 15/32	139 5 15/32	132.7 5 15/64	175 6 57/64	124 4 7/8	16 5/8
BS-2A	218	74	139	134	175	124	16

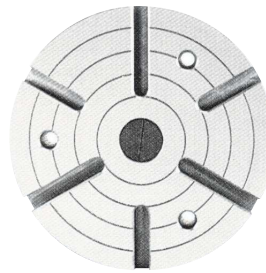
A5 MILLING MACHINE ACCESSORIES

ORDER NO.	WEIGHT(kgs)	CODE NO.
BS-2	65	1001-052
BS-2-J-6	78.5	1001-055
BS-2-J-8	80	1001-056
BS-2A	36	1001-057
BS-2A-J-6	42	1001-058
BS-2A-J-8	49	1001-059

ORDER NO.	Gross Weight kg	Meas. CFT	Applicable Chuck
BS-0	(C)20	0.8	5"
BS-1	(C)33	1.3	6"
BS-2	(C)65	3.4	6" OR 8"



Standard Accessories



Special Accessories

The same as Rotay table
Please see page A2

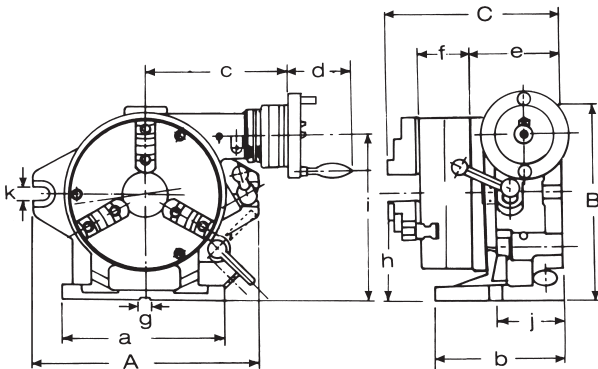


CS-8 with VSK-8 3-JAW

MASKING PLATE & FACE PLATE

This product combines the advantages of the Super Index with those of a worm-gear index. When mounted on a milling, boring or other machine tool it can carry out single-purpose indexing and indirect indexing using the worm-drive mechanism. Disengaging the worm drive the 24-notch master plate permits 2, 3, 4, 6, 8, 12 and 24 dividing in the same manner as the Simple Index. When the chuck is removed, the unit can be used as a horizontal and vertical type rotary table. The operating handle to rotary table worm gear reduction ratio is 1:90. The operating handle collar is graduated in one minute, and readings down to ten seconds can be set on the vernier.

- Super spacer index include 3 jaw chuck, 10"/250mm face plate, masking plates 2, 3, 4, 6, 8, 12.



The state of CS-8 fitted with
Face Plate & Dividing Plate

Specifications

Unit:mm

ORDER NO.	Numbers of dividing	Chuck				Face plate		A	B	C	a
		Outer diameter	Inner jaw	Outer jaw	Inner dia	Outer dia	Thickness				
CS-6	2, 3, 4, 6 8, 12, 24	167 VSK-6	4~42	10~156	44	203	50	250	235	221	220
CS-8		210 VSK-8	4~62	10~180	63	254	58	310	285	243	225

Unit:mm

ORDER NO.	b	c	d	e	f	g	h	i	j	k	Gross Weight kg	Meas. CFT	CODE NO.
CS-6	150	184	82	112	66	16	123	186	80	18	(W)44.5	1.2	1001-060
CS-8	160	201	82	125	75	16	155	232	90	18	(W)71.5	3.1	1001-061

(W)Wooden Case (C)Carton Case



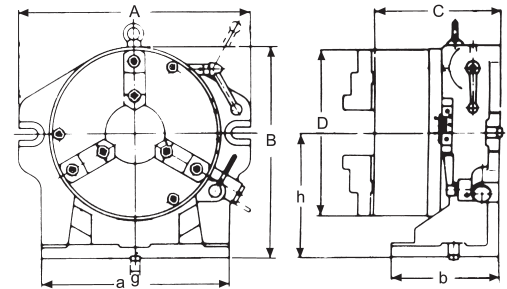
CC-12
BIG HOLE DESIGN



CC-8



- The center through hole is big to be suitable for the large and long workpiece.
- Hardened and ground 24 position master plate, can index the special angle of 15 with excellent accuracy.
- CS-Type can be used with 2 pcs type 3-Jaw Chuck. Especially, it does similar work. as rotary table when it match with face plate.
- Rapid indexing and easy operation. It's a sharp equipment for mass-production.
- Simple index include 3-jaw chuck, Masking Plates 2, 3, 4, 6, 8, 12
- Used the key guide block, the center can be corrected quickly and accurately.
- CC-6 WITH VSK-6A CHUCK
CC-8 WITH VSK-8A CHUCK
CC-12 WITH VSK-12 CHUCK



Special Accessories



STANDARDS OF ACCURACY for Simple Index for Super-Dex.

NO.	Testing Objective	Tolerances Unit: inches Permitted Max.
1	Parallelism of table surface to base per 12"	.0006
2	True running of axial movement of table surface	.0006
3	True running of center boss	.0004
4	Squareness of base to angle face per 12"	.0008
5	True running of chuck center	.0012
6	Dividing accuracy individual spacing error	45"

Specifications

Unit:mm

ORDER NO.	Dividual number	A	B	C	D	a	b	h	Inner jaw	Guide black g	Outer jaw	Diameter of hole (turret)	Diameter of hole (chuck)	Gross weight kg	Meas. CFT	CODE NO.
CC-6	2, 3, 4, 6, 8, 12, 24	260	218	156.2	167	220	130	123	4~42	16	10~156	44	44	(C)29.5	0.9	1001-062
CC-8	2, 3, 4, 6, 8, 12, 16, 24, 48	312	257	173.3	200	258	148	155	4~62	16	10~180	63	58	(C)51.5	1.3	1001-063
CC-12	2, 3, 4, 6, 8, 12, 16, 24, 48	433.2	391	232.5	310	353.8	198.3	228	5~108	16	15~265	106	105	(W)90.7	3.6	1001-066



Precision Index Table



VERTEX®



2 PCS HIRTH Coupling

VIT-450~1200 PICTURE

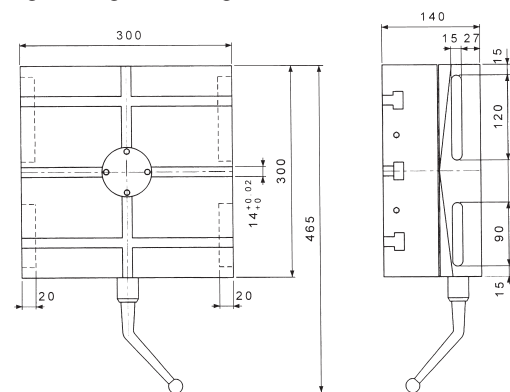
ORDER NO.	VIT-300-15	VIT-450-1	VIT-600-1	VIT-700-1			
		VIT-450-5	VIT-600-5	VIT-700-5	VIT-800-5	VIT-1000-5	VIT-1200-5
Table size LxW (mm)	300x300	450x450	600x600	700x700	800x800	1000x1000	1200x1200
Height (mm)	140	170	200	220	280	300	340
Spindle hole (mm)	-	ø30	ø40	ø40	ø60	ø60	ø80
T-slot (mm)	14	18	20	20	22	22	22
Table rotating		Clockwise and counterclockwise					
Table Lifting up & Clamp down stroke (mm)	5	5	5	5	5	8	8
Driving	Longitudinal	Manual					
	Revolving	Manual					
Number of division (degree)	15°	1° or 5°					
Division (sec.) Accuracy		±3					
Max. load weight in theory (kgs)	1200	2400	3400	3400	4500	6000	7000
Allowable load weight (kgs)	500	1000	2000	2000	3000	5000	6000
Clamping capacity (kgs)	-	2200	3200	3200	5400	5400	8100
N.W. (kgs)	94	205	400	600	900	1200	2000
CODE NO. 1°	1001-070(15)	1001-071	1001-072	1001-073			
CODE NO. 5°		1001-081	1001-082	1001-083	1001-084	1001-085	1001-086

- The body is FC-35 cast iron, durable and will last longer without deformation.
- Clamping/Unclamping by pneumatic, easy operation.
- Powerful clamping design, allow heavy cutting and boring.

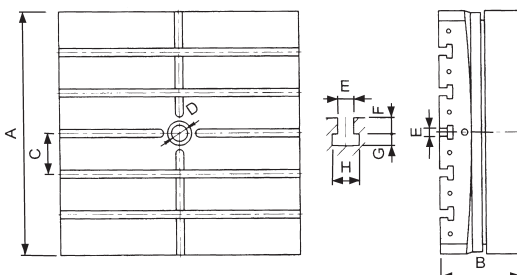
- Build-in 2 pieces hirth coupling for positioning, indexing accuracy +/-3 sec, ensure a long-term operation.
- Suitable for the high accuracy machining such as Boring-Milling, Grinding-Machine.

DIMENSION

VIT-300 (PICTURE)



VIT-450~1200



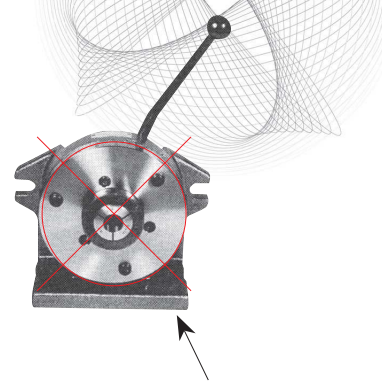
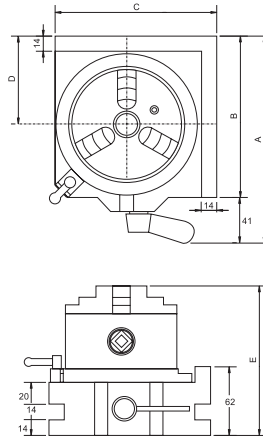
	VIT-450	VIT-600	VIT-700	VIT-800	VIT-1000	VIT-1200
A	450	600	700	800	1000	1200
B	170	200	220	280	300	340
C	100	100	125	100	150	200
D	30	40	40	60	60	80
E	18	20	20	22	22	22
F	16	20	20	23	23	23
G	12	14	14	15	15	15
H	28	35	35	38	38	38



Economical Type Rapid Index



VERTEX®



5C COLLET INDEXER
NON ECONOMICAL

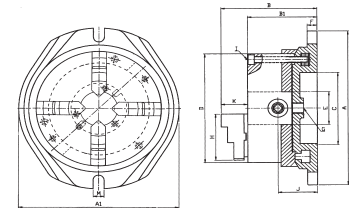
- 3 JAW CHUCK VSC-4A, for VSI-4 / VSC-5A for VSI-5, the big range clamping capacity $\varnothing 3 - \varnothing 100$, it's better than collet fixing type.
- Simple & rapid operation.
- Dividual number 24-notch (15° each)
- Table scale 1° , for angular indexing.
- Table bore 30mm.
- Horizontal / vertical & 2 direction
- Suit for milling & drilling machine using.
- Optional: tailstock TS-1, Please see page A2

ORDER NO.	A	B	C	D	E	kgs	CODE NO.
VSI-4	187	146	146	80	135	10.5	1001-064
VSI-5	202	161	161	87	142	14.5	1001-065



Simple Rotary Chuck

NEW



VSR-6 WITH VPS-6A CHUCK
VSR-8 WITH VPS-8A CHUCK

- 4-jaw chuck (include reversable and removable jaw) is designed with swivel base for multifunctional purpose.
- VERTEX simple rotary chuck can be placed and fixed on your desired position.
- 360° vernier scale: smooth swival motion and easy locking by screws.
- Both horizontal and vertical position could be used on milling and machining center.

ORDER NO.	A	A1	B	B1	C	D	F	G	H	I	J	K	M	kgs	CODE NO.
VSR-6	244.6	233.2	139.3	110.4	100	160	14.9	25	70.6	3-M8	69	28.9	14	18	1001-066
VSR-8	340	269.4	159	124.6	115	200	18.4	25	86	3-M10	75.7	34.4	18.4	30.5	1001-067



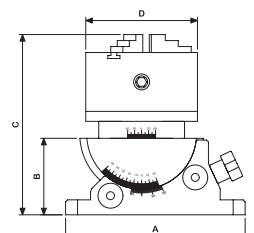
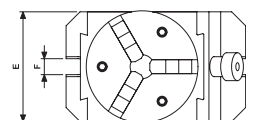
Precision Universal Angle Chuck

NEW



- Precision graduation for accurate reading.
- Its swivelling and tilting features make this unit well suited for straight or inclined surface, angular drilling machining on various machine tools.
- With VSC-4 3-Jaw chuck.
- O.D. clamping $\varnothing 3-90$ mm,
- I.D. clamping $\varnothing 32-84$ mm.
- Tolerance $\pm 0.01\text{mm}/100\text{mm}$.
- 2 axis with angle scale
- For angle setting
- Chuck indexing / Rotating setting
- Tilting Features same as VUA series, Page B5.

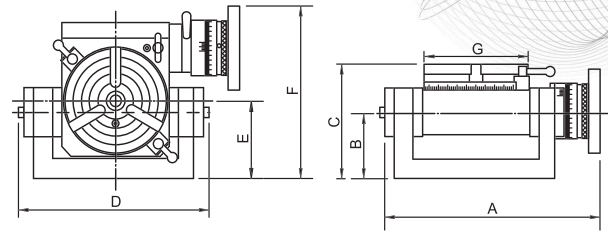
With VSC-4 Chuck



ORDER NO.	A	B	C	D	E	F	G.W (kgs)	CODE NO.
VUA-100J	180	77	181	112	110	16	14	2003-060



Universal Tilting Rotary Table



- Tilting range 0-90 degrees from horizontal to vertical position, It is high rigidity.
- Minimum Set-up time: It has two screws to lock setting. Low profile body for bigger capability.
- Worm is hardened and ground. The ratio is 90:1. The work table is graduated a full 360° so that of the handle moves the table through 4°. Micro collar is graduated in steps of 2' min.
- The tailstock & Dividing plates are optional. The sizes is same as the rotary table, please see page A2.
- For arc or index cutting at milling machine, Grinding machine or drill Machine.....

OPTIONAL: 1. TAILSTOCK

ORDER NO.	CODE NO.
TS-1	1001-022
TS-3	1001-024

2. DIVIDING PLATE

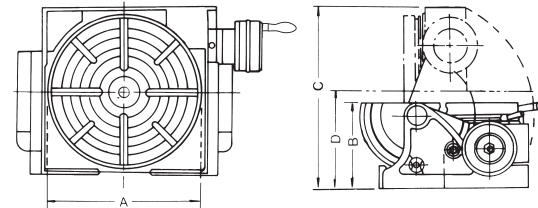
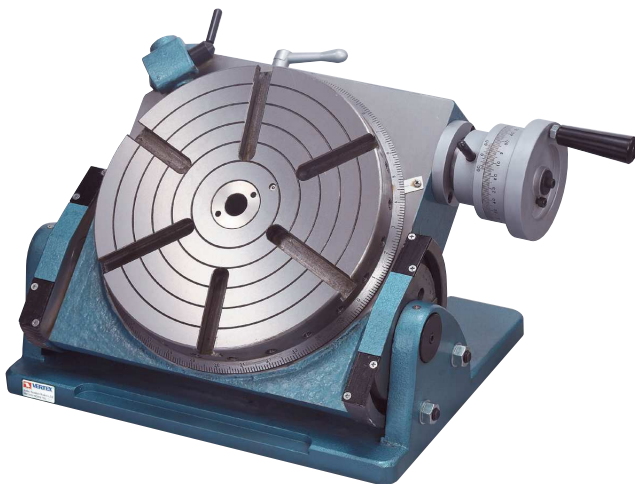
ORDER NO.	CODE NO.
*DP-1 for VU-100, 150	1001-030
*DP-2 for VU-200	1001-031

ORDER NO.	A	B	C	D	E	F	G	SUITABLE TAILSTOCK	SUITABLE DIVIDING PLATE	WEIGHT kgs/cuft	CODE NO.
VU-100	228	68	117	202	80	177	100	TS-1	DP-1	13.5kgs/1.5	1001-011
VU-150	266	75	140	246	90	216	150	TS-1	DP-1	21.5kgs/2.0	1001-012
VU-200	429	111	177	432	141	283	205	TS-3	DP-2	46kgs/2.5	1001-013



Universal Tilting Rotary Table

ORDER NO.VU-300 CODE NO.1001-010



Order No. & Dimensions

ORDER NO.	VU-300
TABLE DIAMETER A	300mm
TABLE HEIGHT (horizontal) B	185mm
TABLE O/A HEIGHT (VERTICAL) C	370mm
CENTER HOLE	MT3
CENTER HEIGHT (vertical) D	208mm
DIRECT INDEXING	24-div
GEAR RATIO	90:1
WEIGHT (G.W.)	102kgs
WEIGHT (N.W.)	99.5kgs

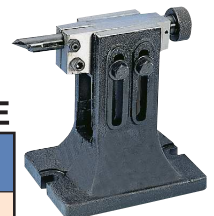
Special Accessories

1. DIVIDING PLATE DP-5

2. TAILSTOCK

TSU-2 ECONOMICAL TYPE

ORDER NO.	WEIGHT kgs	CODE NO.
TSU-2	12	1001-021



This is an accurate designed table for milling, boring and other machine tools.

This table allows indexing, facing and other work to be carried out rapidly with extreme precision.

Tilting range 90 degrees from horizontal to vertical position, 1 rotation of handle equals 3 degrees, 5 minutes tilting reading. 10 Second Vernier Scale.

- Table Dial 1 Minute Graduations.
- Fast Degrees: Dividing Notch Pin & 24 Holes in 15 Degree
- Around that insures Rapid & Accurate Spacing.
- Minimum Set-Up time.
- Rugged Construction.



Hydraulic Machine Vise

PAT NO. 98202966



VERTEX



- New design: Adjustable pressure device.
- Suit for processing of brass, AL, plastic, steel.

- New design: lock proof system: prevent wrong clamping force sticks the vise.
- Ruggedly constructed for milling, drilling, shaping, grinding and many other machine shop applications.
- Sliding bed ways flame hardened and ground.
- Concealed spindle for protection against chips and dirt.
- Hydraulic-booster system for maximum clamping pressure with minimum force.
- Quick of clamping & locking and easy of operation.
- Accuracy within 0.02mm.
- Furnished with or without swivel base.
- Hydraulic-booster system is guaranteed for using 1 years limited.
- The hydraulic oil number is #68.
- For Hydraulic-booster trouble shooting, please see manual.

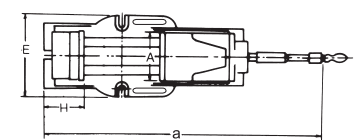
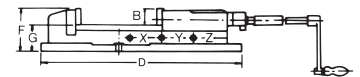


Hydraulic controller:
provide stable pressure,
hydro indexer.

Order No. & Dimensions

Unit:mm

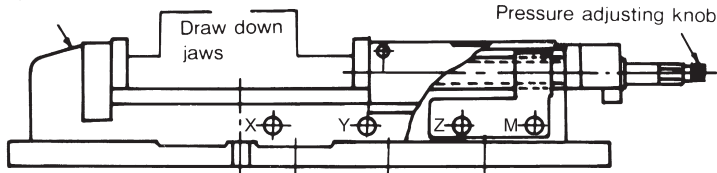
ORDER NO.	A	B	C OPEN	a	D	E	F	G	H	Max. Clamp Force	G.W. (kg)	Meas CFT	CODE NO.
VH-4	105	36	170	525	440	170	95	58	95	3750kgs	(C)27.2	0.8	1002-001
VH-5	130	48	210	670	550	207	120	70.5	107	4500kgs	(C)47.4	1.5	1002-002
VH-6	150	53	300	800	620	225	135	82.5	117	5250kgs	(C)63	2.2	1002-003
VH-8	200	62	300	900	680	280	162	100	150	6000kgs	(W)106.6	3.6	1002-004
NEW VH-8L	200	62	400	900	780	280	162	100	150	6000kgs	(W)123		1002-005



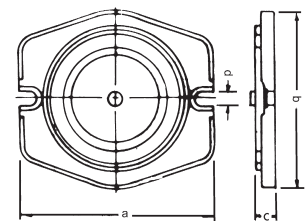
CLAMPING CAPACITY

(3 STEPS CLAMPING POSITION FIG)

Hydraulic machine vise



Swivel base



Max. Opening Size Clamping Capacity

Unit:mm

ORDER NO.	X	Y	Z	M
VH-4, VHT-4	0-60	57-115	110-170	
VH-5	0-70	68-144	142-210	
VH-6, VHT-6	0-100	95-200	195-300	
VH-8	0-100	98-200	195-300	
VH-8L	0-100	98-200	195-300	300-400

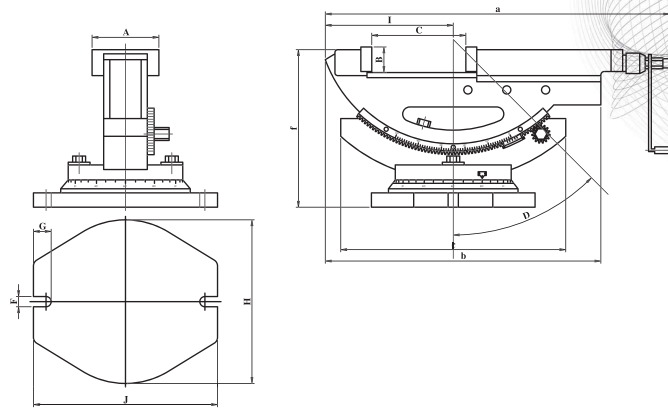
Swivel base

Unit:mm

ORDER NO.	a	b	c	d	G.W. (kg)	CODE NO.
HS-4	280	210	28	16	4	1002-010
HS-5	297	267	33	16	7	1002-011
HS-6	335	310	36	19	10	1002-012
HS-8	373	355	41	19	16	1002-013



Tilting Hydraulic Machine Vise



- The same as characters of VH type. Swivel base same as VH type.
- Tilting seat set by two locking screws, works in high stability.
- Angle setting ranges from 0°~50°. Tilting degrees graduated for easy reading. Swivel base graduated to 360° and fixable in any position.
- THE (3 STEPS CLAMPING POSITION) SAME AS VH TYPE.
- Accuracy within 0.02mm
- Hydraulic-booster system is guaranteed for using 2 years limited.

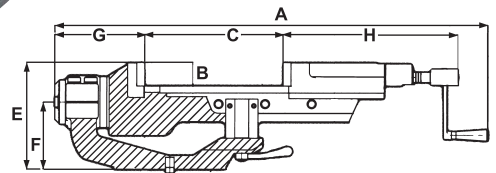
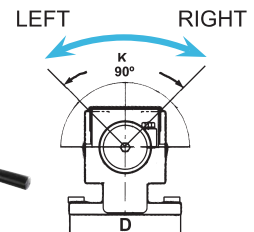
Unit:mm

ORDER NO.	A	B	C OPEN	D	E	F	G	H	J	a	b	c	f	Max. Clamp Force	G.W. (kgs)	Meas CFT	CODE NO.
VHT-4	110	36	220	50	15	15	26	240	270	500	404	335	230	2500kgs	(W)33.3	1.2	1002-020
VHT-6	154	54	350	50	20	19	28	300	330	800	585	415	290	4500kgs	(W)88	4.4	1002-021



Universal Tilting Hydraulic Machine Vise

PAT NO. 98202966

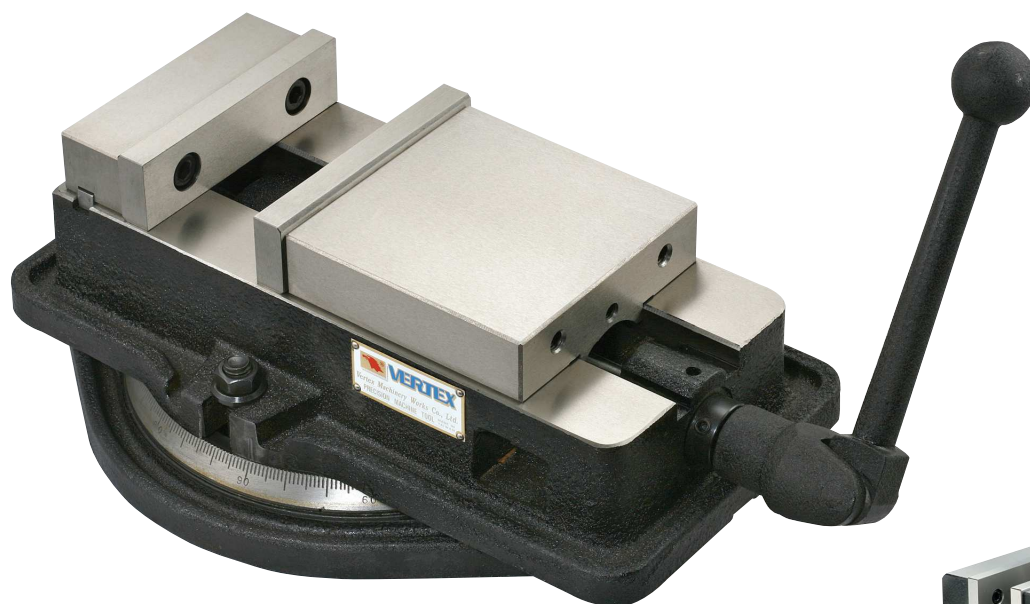


- NEW DESIGN: ADJUSTABLE PRESSURE DEVICE.
- SUIT FOR PROCESSING OF BRASS, AL, PLASTIC, STEEL.
- NEW DESIGN: SUPER OPEN JAW SIZE, SMALLEST OPEN JAW SIZE.

LOCK PROOF SYSTEM: PREVENT WRONG CLAMPING FORCE STUCKS THE VISE.

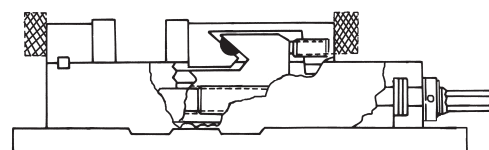
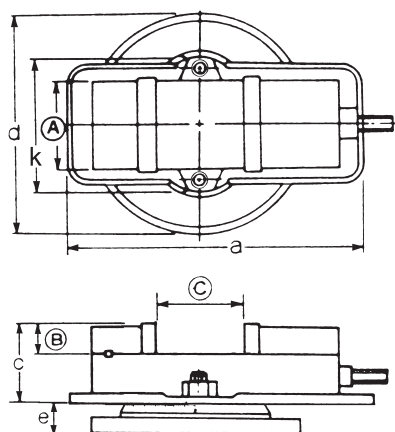
- 45 DEGREE TILTING FUNCTION, ALLOW 90 DEGREE PROCESSING!
- TILTING FUNCTION HAS MORE WORK FREE ALLOWANCE WILL NOT BLOCK OR HIT MACHINE!
- LOWER OVERALL HEIGHT PROVIDES MORE SPACE FOR HEAVY CUTTING STABILITY AND BIGGER WORKPIECE!
- TILTING STRUCTURE HAS STRONG TIGHTENING DESIGN.
- ALL FUNCTION SAME AS VH SERIES. EXCEPT THE TILTING STRUCTURE.

ORDER NO	A	B	C OPEN	D	E	F	G	H	i	j	Max. Clamp Force	K MAX. degree	G.W. (kgs)	CODE NO.
VHT-4U	653	36	170	ø162	165	104	169	263	141	80	3750kgs	90°	37.39	1002-025
VHT-6U	942	51	300	ø242	231	145	196	380	199	125	5250kgs	90°	93.96	1002-026



VD-675, VA-8L is NEW
VD-675 6" opened 7 1/2"
VA-8L 8" opened 10 1/4"

VA-8L

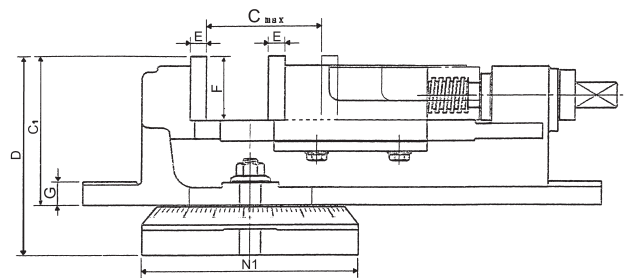
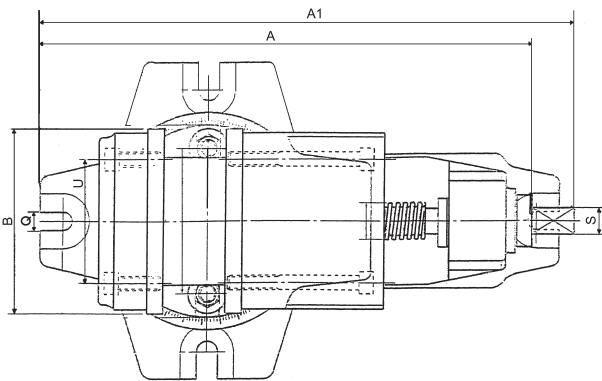
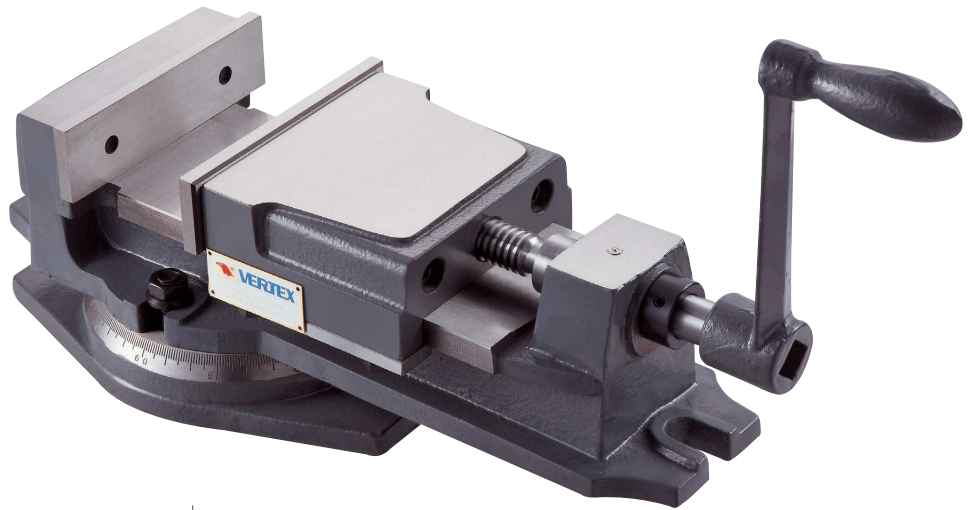


- The enclosed lead screw and sliding surface are harden and ground.
- Highest clamping power. It's very accurate and durable.
- This Vise is so designed that the horizontal Force generated by tightening the handle pushes the semisphere within the movable jaw and thus thrusts the movable jaw downward.
- There fore, the workpiece does not lift, even if it is held at the top of the jaw plates.
- Four setting positions of the jaw plates are available, widening the jaw plates opening.
- The new VD675, VA-8L have two major improvments: a wide opening jaw and a new stationary jaw that features an integral key larger fasteners which reduce deflection by 50%
- ACCURACE WITHIN 0.02mm

Order No. & Dimensions

Unit:mm/inches

ORDER NO.	A	B	C OPEN	a	k	c	d	e	f	Max. Clamp Force	Gross weight kg		Meas. CFT	CODE NO.
											plain	with swivel base		
VA-4	102 4 1/64	36 1 27/64	103 4 1/16	325 12 13/16	165 6 1/2	96 3 25/32	243 9 9/16	31 1 7/32	6 1/4	1500kgs	16 36	(C)20.4	0.5	1002-030
VA-5	131 5 5/32	36 1 13/32	110 4 21/64	357 14 1/16	193 7 5/8	101 3 31/32	278 11	32 1 3/4	7 5/16	2000kgs	25 55	(C)29.7	0.9	1002-031
VA-6	152 6	46 2	142 5 9/32	418 16 7/16	209 8 1/4	119 4 11/16	328 12 29/32	39 1 17/32	9 3/8	2500kgs	36 80	(C)42.6	1.5	1002-032
VA-8	200 7 7/8	62 2 7/16	197 7 3/4	548 21 9/16	295 11 5/8	147 5 13/16	416 16 3/8	45 1 25/32	11 7/16	3000kgs	70 155	(W)80.8	2.7	1002-033
VD-675	152 6	38 1 1/2	190 7 1/2	552 21 3/4	295 11 5/8	134 5 9/16	381 15	47 1 7/8	11 7/16		37 82	(C)45.6	1.5	1002-034
VA-8L	200 7 7/8	64 2 7/16	260 10 1/4	510 20 3/4	245 9 9/16	156 6 1/8	370 14 9/16	47 1 7/8			72 155	(W)71.6	2.7	1002-035



- It's a practical piece of equipment with excellent precision and a high quality finished.
- Body, movable jaw and swivel base made of closes-grained high tensile iron castings. Built for heavy duty machining and retained accuracy.
- Jaw plates were made of hardened and grounded tool steel.
- It's the most suitable for the Milling, Grinding and Drilling.
- ACCURACE WITHIN 0.02mm

Order No. & Dimensions

Unit:mm

ORDER NO.	A	A1	B	C OPEN	C ₁	D	E	F	G	N1	Q	S□	U	Max. Clamp Force	G.W. (kg)	Meas CFT	CODE NO.
VK-4	280	310	104	62	84	114	10	36	14	123	12	15	68	900kgs	(C)10	0.2	1002-040
VK-5	350	390	131	85	98	130	10	36	15	148	14	15	80	900kgs	(C)16.6	0.5	1002.041
VK-6	418	470	152	112	107	148	10	42	17	182	14	15.5	90	1000kgs	(C)27.8	1.1	1002-042
VK-8	548	609	204	150	148	191	12.5	62	20	233	20	21	120	1400kgs	(C)56	1.5	1002-043



Super Open Vise

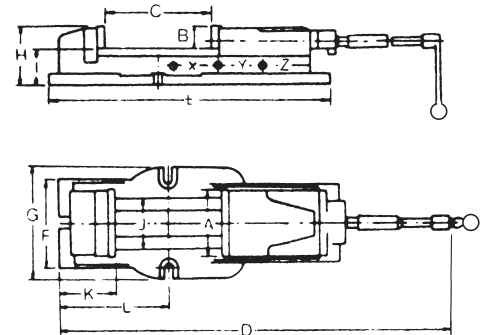


VERTEX®

MECHANICAL TYPE



VJ-600



EXCEPT THE HYDRAULIC SYSTEM,
THE FEATURE IS SAME AS VH-TYPE
ACCURACE WITHIN 0.02mm

VJ-400 JAW OPENED 180mm
VJ-500 JAW OPENED 230mm
VJ-600 JAW OPENED 300mm

Order No. & Dimensions

Unit:mm

ORDER NO.	A	B	C OPEN	D	E	F	G	H	I	J	K	L	Max. Clamp Force	G.W. (kg)	Meas CFT	CODE NO.
VJ-400	110	37	180	522	440	133	168	94	58	80	97	150	1500 kgs	(C) 24.8	0.8	1002-050
VJ-500	130	48	230	580	455	168	192	114	65	97	75	157	1500 kgs	(C) 33.4	1.5	1002-051
VJ-600	154	54	300	695	540	186	200	131	78	116	90	182	1500 kgs	(C) 46.1	2.2	1002-052

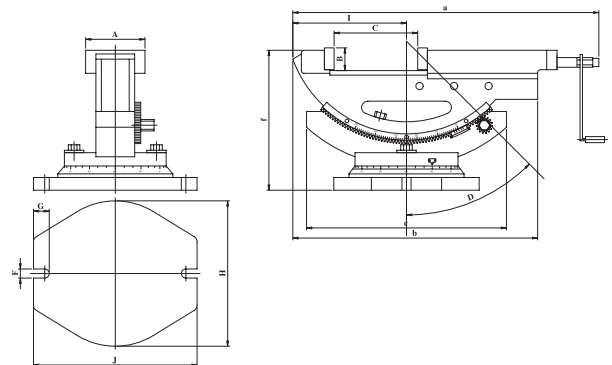


2-Way Angle Milling Vise



VWT-4B

VWT-6B



EXCEPT THE HYDRAULIC SYSTEM,
THE FEATURE IS SAME AS VHT-TYPE

VWT-4B JAW OPENED 220mm
VWT-6B JAW OPENED 350mm

Order No. & Dimensions

Unit:mm

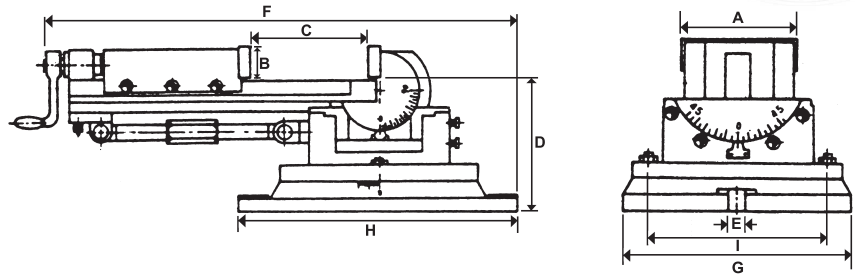
ORDER NO.	A	B	C OPEN	D	E	F	G	H	J	a	b	c	f	Max. Clamp Force	G.W. (kg)	Meas CFT	CODE NO.
VWT-4B	110	36	220	50	15	15	26	240	270	500	404	335	230	1200 kgs	(C) 33.3	1.2	1002-060B
VWT-6B	154	54	350	50	20	19	28	300	330	800	585	415	290	1600 kgs	(W) 79.7	4.4	1002-061B



3-Way Angle Milling Vise



VERTEX®



- Angles can be set in 3 dimensions. Swivels 360° around base. The vise can be elevated through 90° from the horizontal to vertical. And also can be tilted on its lower angle base up to 45° in both right and left.
- Tilting of any angle all keep the workpiece steady, smooth.
- Particularly the clamping part of screw is strengthened by a bush made of gunmetal.

Specifications

Unit:mm

ORDER NO.	A	B	C OPEN	D	E	F	G	H	I	Total Height	Max. Clamp Force	Gross Weight kg	Meas CFT	CODE NO.
VW-3	81	30	80	127	14	400	185	240	130	475	800kgs	(C)16.7	0.7	1002-080
VW-4	110	37	116	145	16	535	238	317	180	595	1000kgs	(C)32.7	1.2	1002-081
VW-5	135	37	145	167	18	620	270	357	210	690	1600kgs	(W)49.4	1.6	1002-082



2-Way Machine Vise



- Heavy cast iron structure
- Scales in both axis
- 360° swivel around Z-axis
- 90° vertical and horizontal swivel

Specifications

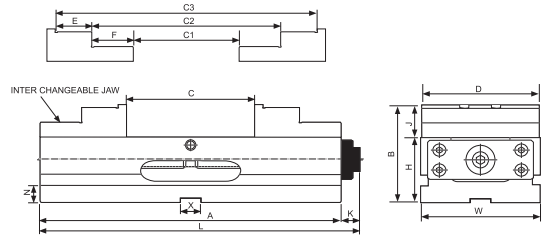
Unit:mm

ORDER NO.	Jaw		C Max. open	Alignment slot	Height	L x W x H (OVERALL)	Max. Clamp Force	Weight (kgs)	Packing	CODE NO.
	Width	Height								
VWT-5	125	46	100	16	160mm	410x315x160	900kgs	31.7	432x330x190	1002-090
VWT-6A	160	51	120	16	195mm	430x320x195	1600kgs	47	510x365x240	1002-091

Self Centering Vise



NEW



- Suit for 4/5 axis CNC machine
- Repeat clamping tolerance $\pm 0.01\text{mm}$
- Material: FCD60, high tenison cast iron
Slide way hardness: HRC 45°
- Inter changeable jaw: heat treatment HRC 55°
- Lock down-drawing force: keep work piece from lifting

Specifications

Unit:mm

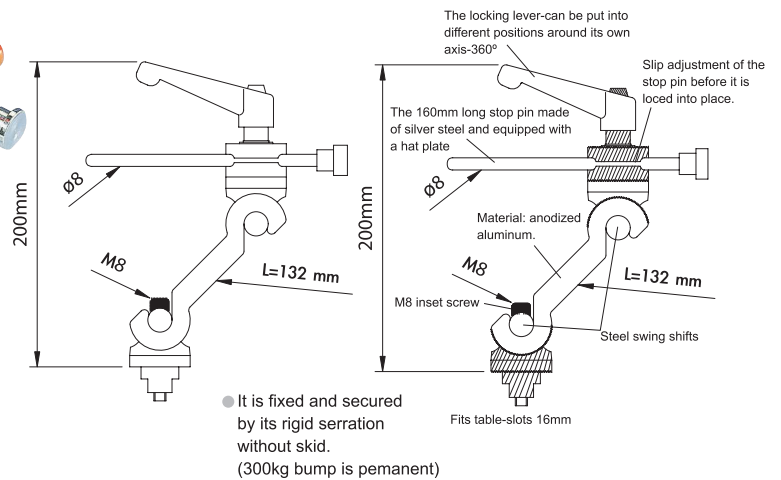
ORDER NO.	A	B	C OPEN	CLAMPING CAPACITY			D	E	F	H	J	K	N	X	CODE NO.
				C1	C2	C3									
VCV-1090	240	120	90	90	70-160	134-222	100	31	35	80	40	20	22	18	1002-108

U/N Work Stopper

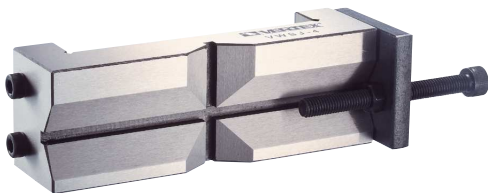


NON TEETH TYPE
ORDER NO. VWS-123
CODE NO. 1002-105
WEIGHT: 0.9kg
T-SLOT: 16mm

ORDER NO. VWS-125
CODE NO. 1002-106
WEIGHT: 1.1kg
T-SLOT: 16mm

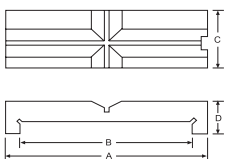


Universal Vise Jaws With Work Stopper



ORDER NO. VWSJ-4, 5, 6, 8

- Can be fixed on any vise jaw by the two screws on the side.
- One jaw in multiple- function features.
- V-type jaw can fix workpiece at horizontal and vertical position.
- Can be performed as work stopper.
- Quick, save your time.



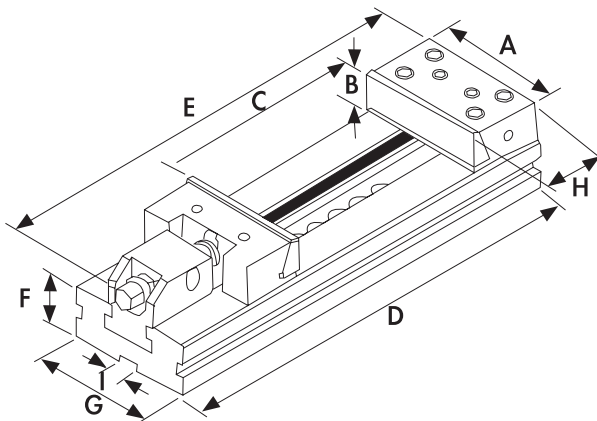
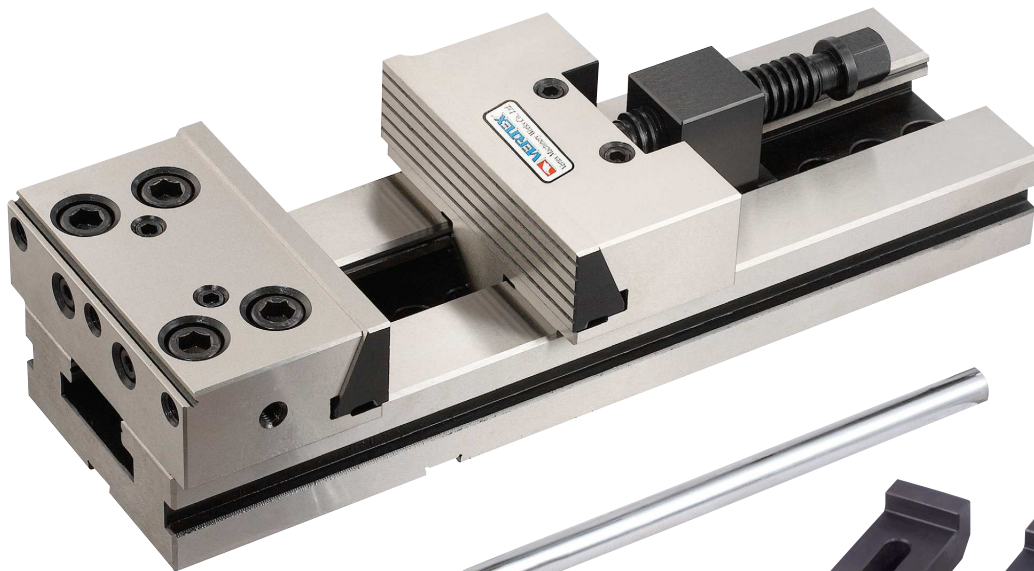
4 FOR THE JAW WIDTH 100-105m/m
5 FOR THE JAW WIDTH 125-130m/m
6 FOR THE JAW WIDTH 150-160m/m
8 FOR THE JAW WIDTH 200-210m/m



ORDER NO.
VWSJ-□ — VISE JAW SIZE
(Unit:inch)

Unit:mm

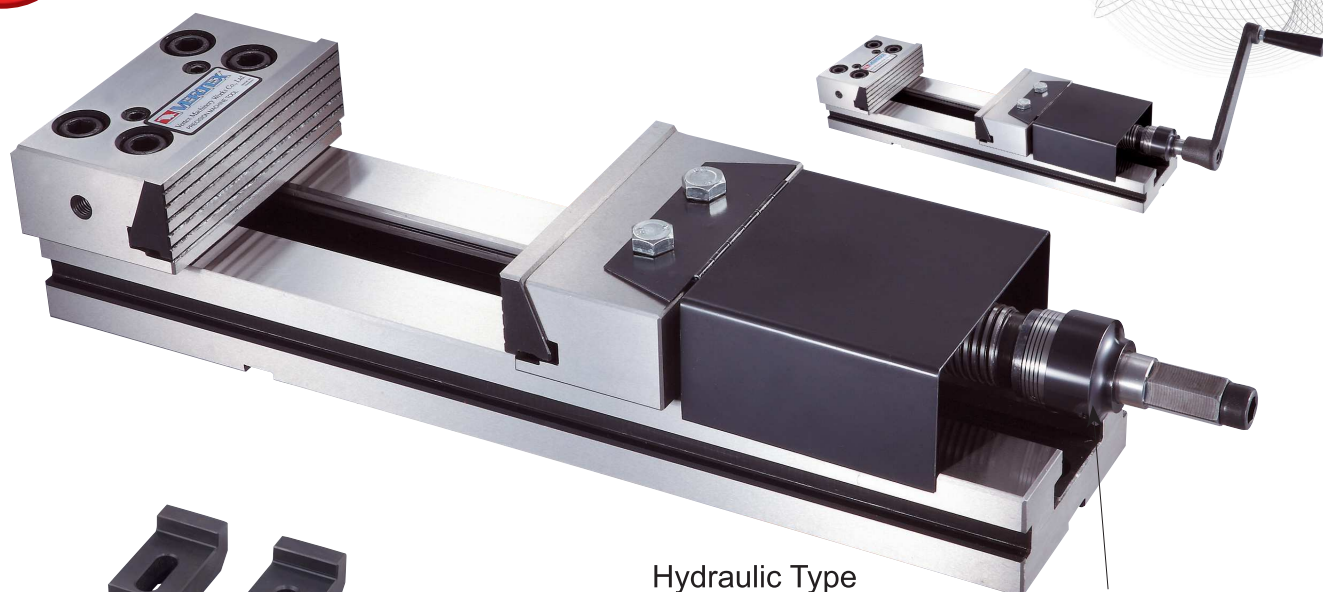
ORDER NO.	A	B	C	D	WEIGHT kgs	CODE NO.
VWSJ-4	145	110	49	38	1.6	1002-170
VWSJ-5	175	140	49	39	1.7	1002-171
VWSJ-6	190	160	53	40	2	1002-172
VWSJ-8	245	210	76	42	4.2	1002-173



Features

- High Accuracy 0.01/100 m/m
- Unlimited Clamping Range
- High Quality Alloy Steel with HRC 59
- High Clamping Pressure
- EACH ONE IS SAME AS HEIGHT.
- CAN BE USED IN MULTIPLE STYLE.
- No Length of Height Limitation
- No Jaw Lift
- Low Profile
- All Vises are Matched parallelism $\pm 0.01/100$ m/m
- Optional=Swivel base

ORDER NO.	VMP -4	VMP -5	VMP -6	VMP -6B	VMP -6C	VMP -7A	VMP -7B	VMP -7C	VMP -8A	VMP -8B	VMP -8C	VMP -8D	VMP -12C	VMP -12E
A	100	125	150	150	150	175	175	175	200	200	200	200	300	300
B	30	40	50	50	50	60	60	60	65	65	65	65	80	80
C OPEN	100	150	200	300	400	200	300	400	200	300	400	500	400	600
D	270	345	420	520	620	455	555	655	573	595	695	795	735	935
E	325	146	530	600	700	620	620	620	718	718	718	880	830	1030
F	35	40	50	50	50	58	58	58	70	70	70	70	78	78
G	75	96	125	125	125	145	145	145	170	170	170	170	195	195
H	78	78	90	89.4	89.4	97	97	97	114	114	114	113.4	120.4	120.4
I	16	16	16	16	16	16	16	16	16	16	16	16	16	16
Max. Clamp Force		1300 kgs	2000 kgs						2000 kgs	2000 kgs				
KG	9.2	16	28.5	34.8	38.1	43.7	48.3	53.5	66.3	73.2	81.3	87.2	125	143
CODE NO.	1002 -190	1002 -191	1002 -192	1002 -201	1002 -202	1002 -193	1002 -194	1002 -195	1002 -196	1002 -197	1002 -198	1002 -203	1002 -204	1002 -205



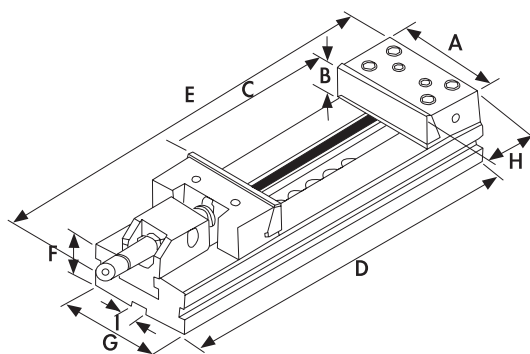
Hydraulic Type

Same height guarantee

Hydraulic Unit

Features

- New design: Adjustable pressure device.
- Suit for processing of brass, AL, plastic, steel.
- New design: super open jaw size, smallest open jaw size.
lock proof system: prevent wrong clamping force sticks the vise.
- Hydraulic clamping force 4500kg for heavy duty cutting.
The screw mechanism type clamping force is 2200 kgs
- Smooth & light operation for the handle.
- High accuracy 0.01/100 m/m
- Unlimited clamping range
- High quality alloy steel with HRC 59
- High clamping pressure
- Eachone is same as height.
- Can be used in multiple style.
- No length of height limitation
- No jaw lift
- Low profile
- All vises are matched parallelism $\pm 0.01/100$ m/m



ORDER NO.	VMP -6BH	VMP -6CH	VMP -7AH	VMP -7BH	VMP -7CH	VMP -8AH	VMP -8BH	VMP -8CH	VMP -8DH	VMP-12CH	VMP -12EH
A	150	150	175	175	175	200	200	200	200	300	300
B	50	50	60	60	60	65	65	65	65	80	80
C OPEN	300	400	200	300	400	200	300	400	500	400	600
D	520	620	455	555	655	573	595	695	795	735	935
E	660	760	680	680	680	778	778	778	940	890	1090
F	50	50	58	58	58	70	70	70	70	78	78
G	125	125	145	145	145	170	170	170	170	195	195
H	89.4	89.4	97	97	97	114	114	114	113.4	120.4	120.4
I	16	16	16	16	16	16	16	16	16	16	16
Max. Clamp Force											
KG	29	33	38	43	48	65	69	74	79	115	135
CODE NO.	1002-201H	1002-202H	1002-193H	1002-194H	1002-195H	1002-196H	1002-197H	1002-198H	1002-203H	1002-204H	1002-205H

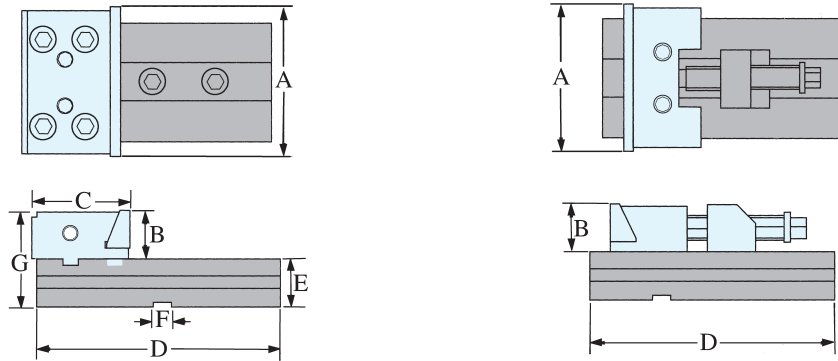
Modular Machine Free Vise



MODULAR VISES are manufactured under rigid quality control. Only the most suitable materials are used, and the accuracy of even the smallest components is assured. As a result of the high standard construction MODULAR VISES can be depended upon to maintain their accuracy under the most severe operating conditions.



Free head stock & fixed stock can for large wider workpiece use.



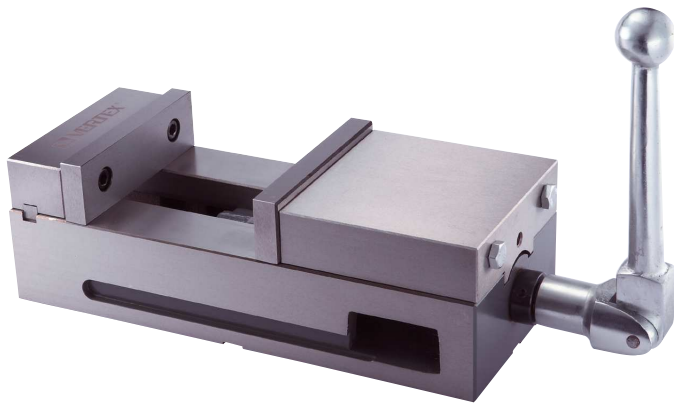
ORDER NO.	VMP-4L	VMP-5L	VMP-6L	VMP-7L
A	100	125	150	175
B	30	40	50	60
C	78	78	90	97
D	140	160	230	240
E	35	40	50	58
F	16	16	16	16
G	65	80	100	118
KG	8.5	14.5	30.1	42.4
CODE NO.	1002-206	1002-207	1002-208	1002-209



Lock-Fixed II Precision Machine Vise



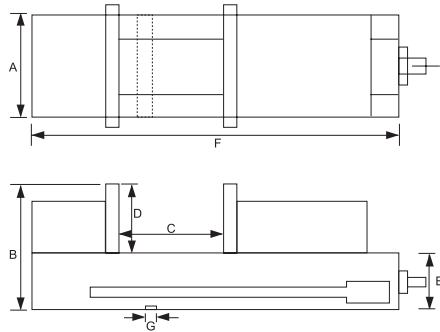
VERTEX®



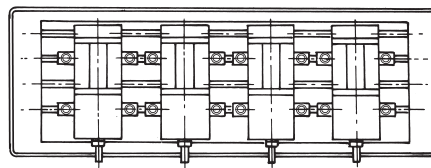
ORDER NO.
VMC-4
VMC-6



Performed
sided vertically.



- With the ability of lock-fixed III 2, 3, 4, 5.
- Use the semi-sphere segment principle.
- When operate several vises (in a row) put on one machine bed, the operating situation is showed as below:



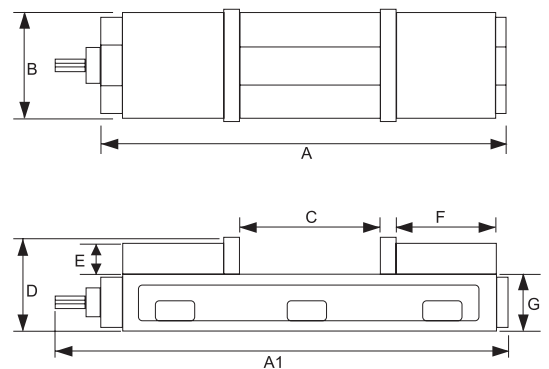
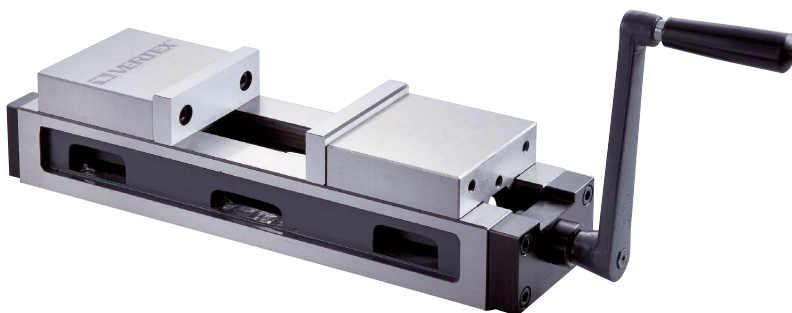
Performed jointly.

ORDER NO.	A	B	C OPEN	D	E	F	G	Max. Clamp Force	MEAS CUFT	WEIGHT (kg)	CODE NO.
VMC-4	108	100	100	37	63	285	16	1500kgs	0.4	14.2	1002-185
VMC-6	156	120	142	46	74	368	16	2500kgs	1.1	29.8	1002-186



Compound Precision Vise

NEW



- Self centering. Suit for rough or irregular workpiece.
 - Compact design
 - High Accuracy
 - Super open capacity
 - Suitable for irregular workpiece.
- Rapid and convenient centralizing.

ORDER NO.	A	A1	B	C OPEN	D	E	F	G	Max. Clamp Force	kgs	CODE NO.
VCV-44	415	462	102	195	95	30	102	60		17.7	1002-240



Hydraulic Machine Vise



VERTEX

Build Out Type



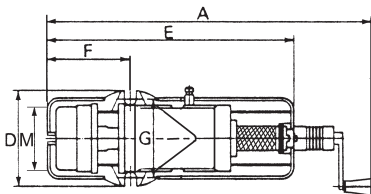
Features

- Rigid material-vise body of ductile iron FCD 60JIS (equal to GGG 60) with 60 kgs/mm² or 80,000 psi tensile strength.
- Vise bed flame hardened to HRC 45 and up, takes up wear and maintain accuracy for long.
- For multiple use plural vises are available on tolerance of 0.01mm in the height of vise bed and in alignment of the clamping surface of the vise jaw at extra cost.
- Mechanical/hydraulic spindle without original clutch mechanism.
- Down thrust "Semi-sphere Segment" mechanism-eliminates jaw lifting and work flitting.
- All surface ground.

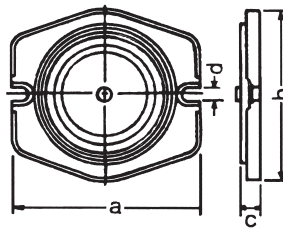
Unit:mm



ORDER NO.	A	B	C OPEN	D	E	F	G	I	M	h	CLAMPING FORCE	N.W. kgs	CODE NO.
VHO-5	695 920	570 795	0-220	190	505	180	160	105	130	55	3500kg	36.5	1002-220
VHO-6	750 1060	625 935	0-300	240	625	208	196	125	160	58	4000kg	59.1	1002-221
VHO-8	830 1140	725 1035	0-310	280	700	265	240	165	200	63	6000kg	94.3	1002-228



Swivel Base Optional

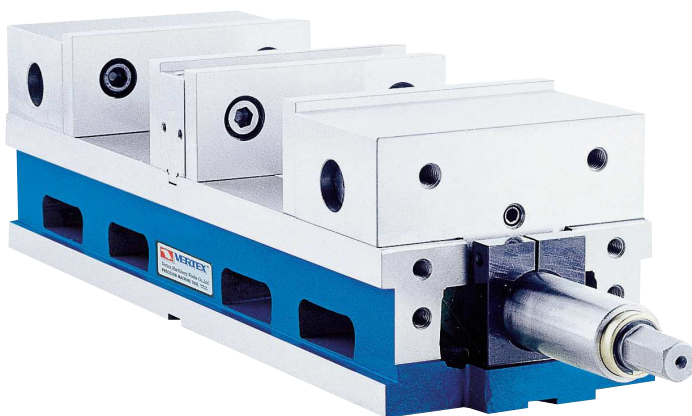


ORDER NO.	A	B	C	D	N.W. kgs	CODE NO.
HSO-5	285	263	35	16	12.5	1002-222
HSO-6	330	320	40	18	16.5	1002-223
HSO-8	415	413	50	21	35	1002-229



Double Clamp Vise

NEW DESIGN & UNIQUE CONSTRUCTION.
EXCLUSIVELY DESIGNED WITH COMBINATION OF
MACHINABLE FIXTURE JAWS AND HARD JAWS



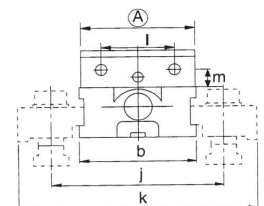
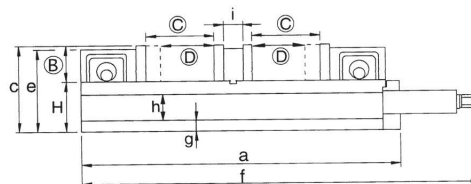
HIGH & EXCELLENT RIGIDITY.

The vise is made of FCD. 80000 PSI (55 kg/cm²) Ductile iron, and the slide ways are hardened to HRC45. The rigid construction prevents the base from distortion. Precision made to high accuracy standard.

- The movable jaws provide alignment to workpiece without jaw lifting.
- The height of jaw plate is 30% higher than the other vise with the same size.
- There are 6 kinds of clamping ways to meet workpieces of different shapes and sizes.

DOUBLE CLAMP SEAT:

One handle can simultaneously operate two movable jaws and clamps 2 pieces of workpiece of same size or different size or one large workpiece. This model can increase efficiency and productivity of CNC machine.



Unit:mm

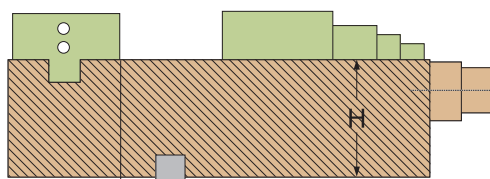
ORDER NO.	A	B	C OPEN	D	a	b	c	H	e	f	g	h	i	j	k	l	m	Guide Block	Max. Clamp Force	Weight (kgs)	CODE NO.
VMC-6D	152	58	34-102	0-68	495	154	140	90	135	610	18	46	30	165	220	98.4	31.8	18		62.1	4005-021

NEW

Great Capacity, Wide Clamping Range

Constant Full Length

- Ultra clamping length more than other VMC-vise
- Big jaw opening.
- Easy operation, compact design.
- Even if the jaw is opened, it does not interfere with the cover of the mounting machine.
- Quick set up, time saving.
- When jaw is opened, it is not affect mounting machine's cover.



H-Accuracy 0.01mm
l-Accuracy 0.01mm

SAME HEIGHT GUARANTEE

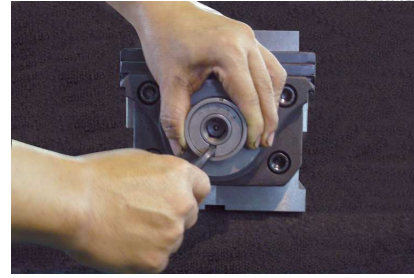


Flexible Clamp System

- High precision system keep the dimension tolerance within 0.01/100mm.
- Vise clamps long size workpieces securely & steady.
- High Accurate System: tolerance within 0.01/100mm.
- VQC Vise can hold long workpiece tight and fixed.

High power & fine balanced body structure stable clamping force

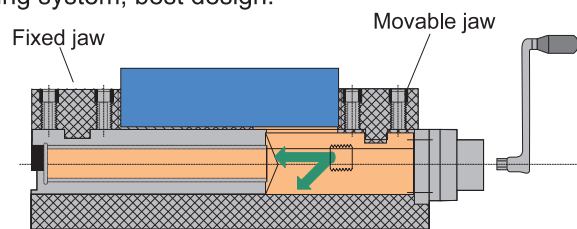
- The clamping force can be easily adjusted due to the preset mechanism.
- Mechanical type toggle enhancement mechanism.
- Clamping force can adjust to suit for different material, such as steel, brass and aluminum.
- Clamping force can be adjusted for customer's requirement.
- Adjustable clamping force device.



How to adjust the clamping force

MC Power vises guarantee the lifting of workpiece is within of 0.02/100mm.

- Adapt a blinding beam system with workpiece lift.
- Prevention mechanism. Pull-in effect.
- Adapt a lift preventing system, best design.



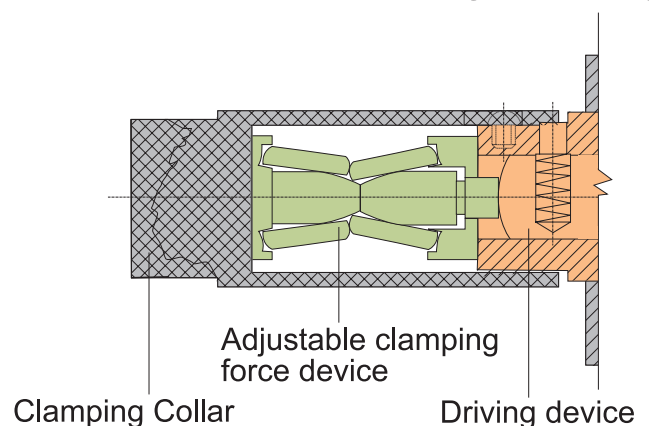
LOCK DOWN DESIGN



CLAMPING FORCE ADJUSTABLE DESIGN From 1800 kgf to 6000 Kgf

Toggle joint device mechanism.

- One of the best vise mechanism design
- After the moveble jaw touch,turning the handle, only the drive shaft is transmitted to the enhancement process of toggle joint device mechanism unit and the movable jaw clamps the work through the clamp spindle at the preset force.
- Clamp work piece, keep turning the handle, until the motion stop which means VQC mechanism has lock workpiece in the pre-set force.

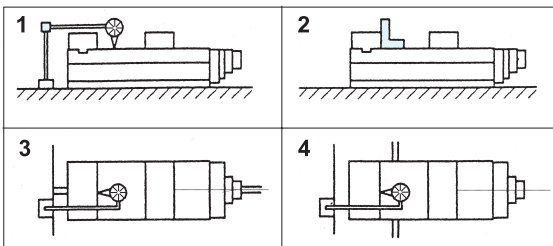




TOGGLE JOINT MECHANISM DESIGN FOR HEAVY DUTY WORKING

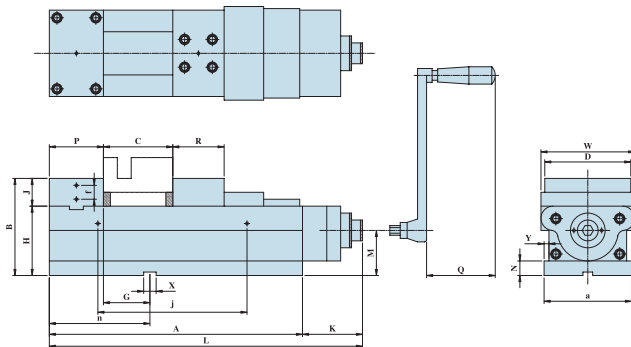
Features

- Compact design. Great clamping capacity & rigid.
- “Toggle joint mechanism”. Provides a steady clamping force against shocks and vibrations during the operations, since it clamps the workpiece resiliently with an aid of the “disc-springs” mounted inside.
- Strong clamping force.
- Large jaw stroke range.
- Exclusive Power Vise provide same height same position for horizontal MC, NC, Machine.
- Body is made of FCD60 high quality ductile cast iron, resists deflection or bending.
- Sliding bed ways flame hardened and ground.
- Concealed spindle for protection against chips and dirt.
- Quick of clamping & locking and easy of operation.



INSPECTION SPECIFICATION

NO.	Inspection Item	Per (100mm)	Guaranteed
1	Parallelism: running face to bottom of bed.		0.01/100mm
2	Squareness :between running face and jaw plate.		0.02/100mm
3	Squareness: keways on bottom of bed to jaw plate.		0.02/100mm
4	Parallelism: running face of the test block to bottom of bed.		0.02/100mm

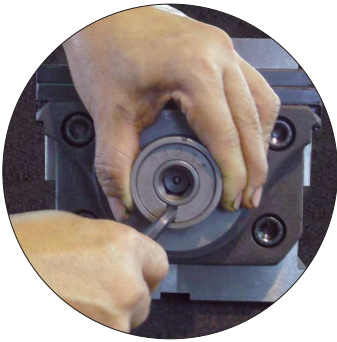


CLAMPING CAPACITY

ORDER NO.	JAW H	JAW Open C	H	MAX. Clamping Force (KN)	G.W. kg
VQC-125	40	205	140	40	40.4
VQC-160	45	275	165	60	72.3
VQC-160L	45	355	165	60	78.6
VQC-200L	70	405	190	60	108

ORDER NO.	A	B	a	D	P	R	G	H	J	K	L
VQC-125	366	140	126	124.5	78	74	66	100	40	86	452
VQC-160	456	165	161	159.5	86	86	58	120	45	98	554
VQC-160L	536	160	162	160	86	86	58	115	45	98	634
VQC-200L	616	180	202	200	102	98	74	110	70	95	711

ORDER NO.	M	N	Q	W	X	Y	C OPEN	f	j	n	CODE NO.
VQC-125	65	21	74	135	18	7	205	20	216	145	4005-005
VQC-160	78	21	94	170	18	7	275	20	286	145	4005-006
VQC-160L	78	21	94	174	18	7	355	20	286	145	4005-007
VQC-200L	75	21	96	217	18	7	405	20	386	177	4005-008


ADJUSTING METHOD

1. FIXED COLLAR
2. TURN BY WRENCH TO GET NO.
0, 1, 2, 3, 4. TO HAVE CLAMPING FORCE

CLAMPING FORCE CHART

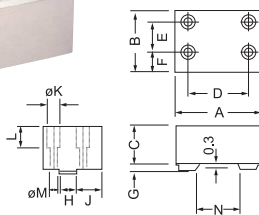
ORDER NO.	SCALE				
	KN				
	4	3	2	1	0
VQC-125	-	40KN	28KN	16KN	8KN
VQC-160	60KN	46KN	32KN	18KN	10KN
VQC-160L	60KN	45KN	32KN	20KN	10KN
VQC-200L	60KN	45KN	32KN	20KN	10KN

OPTIONAL: Soft jaw for different shape workpiece FJ & MJ can for cutting

FJ



Fixed side

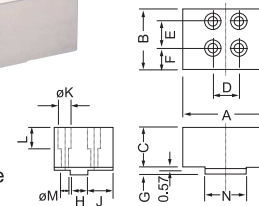

FIXED JAW

ORDER NO.	A	B	C	D	E	F	G	H	J	K	L	M	N	CODE NO.
VQC-125FJ	124.5	91	60	88	45	29.5	8	24	40	19	33.5	13	63	4005-014
VQC-160FJ	159.5	102	60	124	50	34	9	28	45	22	30	15	84	4005-015
VQC-160L-FJ	159.5	102	60	124	50	34	9	28	45	22	30	15	84	4005-016
VQC-200L-FJ	200	122	75	140	62	40	9	28	57	25	37	17	100	4005-016A

MJ



Movable side


MOVEABLE JAW

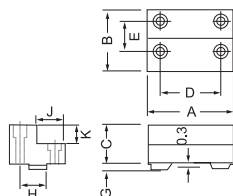
ORDER NO.	A	B	C	D	E	F	G	H	J	K	L	M	N	CODE NO.
VQC-125MJ	124.5	87	60	35	42	29	8	24	38	19	33.5	13	59.5	4005-017
VQC-160MJ	159.5	102	60	56	50	34	9	28	45	22	30	15	80.5	4005-018
VQC-160L-MJ	159.5	102	60	56	50	34	9	28	45	22	30	15	80.5	4005-019
VQC-200L-MJ	200	117	75	62	59	39	9	28	54.5	25	37	17	95	4005-019A



WISE JAWS CAN TURN 180° FOR YOUR REQUIREMENT.

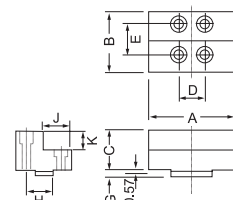
OPTIONAL: Hard jaw for thin type workpiece

FJL


L TYPE FIXED JAW

ORDER NO.	A	B	C	D	E	G	H	J	K	CODE NO.
VQC-125FJL	124.5	78	40	88	45	8	24	39	20	4005-008A
VQC-160FJL	159.5	86	50	124	50	9	28	43	25	4005-009
VQC-160L-FJL	159.5	86	50	124	50	9	28	43	25	4005-010
VQC-200L-FJL	200	102	70	140	62	9	28	51	35	4005-010A

MJL


L TYPE MOVEABLE JAW

ORDER NO.	A	B	C	D	E	G	H	J	K	CODE NO.
VQC-125MJL	124.5	74	40	35	42	8	24	37	20	4005-011
VQC-160MJL	159.5	86	50	56	50	9	28	43	25	4005-012
VQC-160L-MJL	159.5	86	50	56	50	9	28	43	25	4005-013
VQC-200L-MJL	200	98	70	62	59	9	28	49	35	4005-013A

NEW

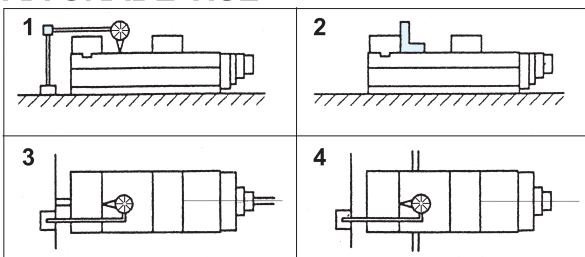


HYDRAULIC TYPE HEAVY DUTY DESIGN

Features

- Compact design. Great clamping capacity & rigid. Light & smooth operation.
- Constructed for milling, drilling, machining center, grinding and many other machine shop applications.
- Body is made of FCD60 ductile cast iron, HIGH deflection/bending resistant.
- Sliding bed ways flame hardened and ground.
- Concealed spindle for protection against chips and dirt.
- Hydra-booster system for maximum clamping pressure with minimum force.
- Quick of clamping & locking and easy of operation.
- Accuracy within 0.01/100mm.
- Hydra-booster system is guaranteed for using 2 years limited.
- The hydraulic oil number is 68#

AA GRADE VISE



INSPECTION SPECIFICATION

NO.	Inspection Item	Per (100mm)	Guaranteed
1	Parallelism: running face to bottom of bed.		0.01/100mm
2	Squareness :between running face and jaw plate.		0.02/100mm
3	Squareness: keways on bottom of bed to jaw plate.		0.02/100mm
4	Parallelism: running face of the test block to bottom of bed.		0.02/100mm

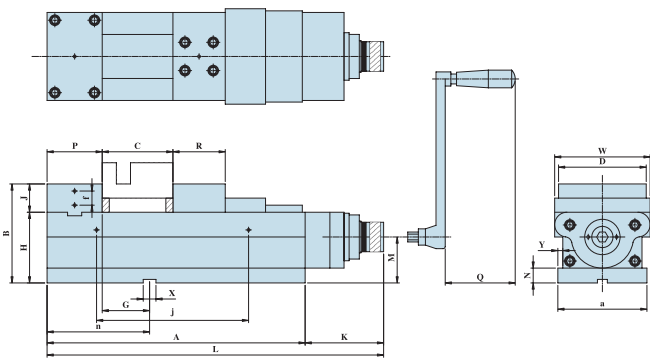
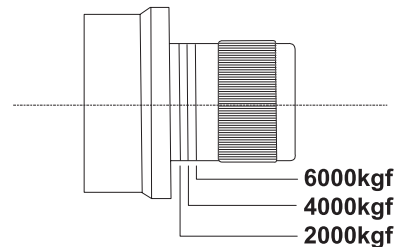
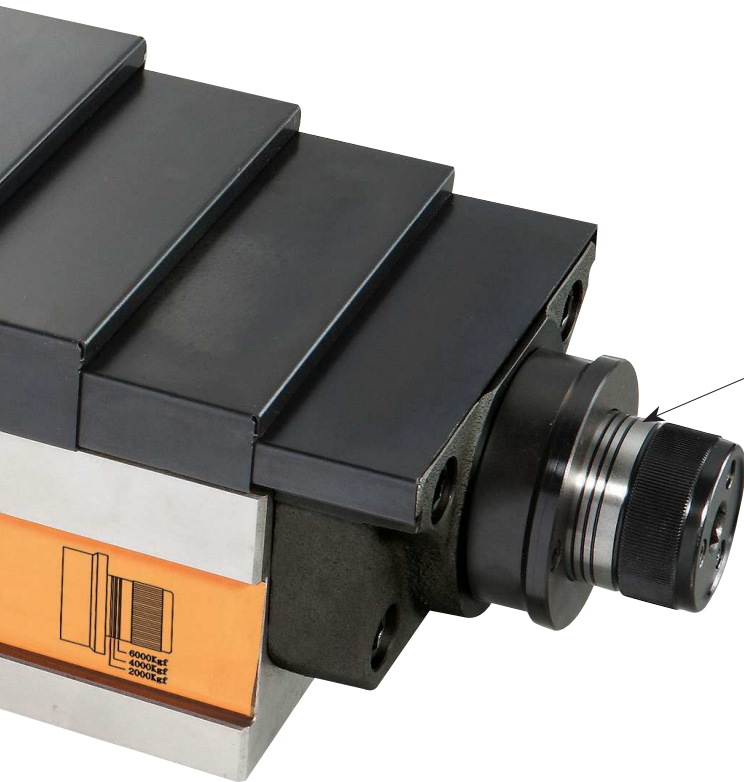


MC Power Vise Hydraulic Type



COMPACT DESIGN-
SMALL LENGTH BODY BUT
SUPER OPEN CAPACITY

HYDRAULIC UNIT-
GREAT SMOOTH OPERATION



ORDER NO.	JAW H	JAW Open C	H	MAX. Clamping Force (8#KN)	G.W. kg
VQC-125H	40	205	140	40	42.5
VQC-160H	45	275	165	60	66
VQC-160LH	45	355	165	60	78.79
VQC-200LH	70	405	190	60	108

ORDER NO.	A	B	a	D	P	R	G	H	J	K	L
VQC-125H	365	140	126	124.5	78	74	66	100	40	113.5	478.5
VQC-160H	455	165	161	159.5	86	86	58	120	45	125.5	580.5
VQC-160LH	535	160	162	160	86	86	58	115	45	125.5	660.5
VQC-200LH	615	180	202	200	102	98	74	110	70	122	737

ORDER NO.	M	N	Q	W	X	Y	C OPEN	f	j	n	CODE NO.
VQC-125H	65	21	73	135	18	7	205	20	215	145	4005-005H
VQC-160H	78	21	93	170	18	7	275	20	285	145	4005-006H
VQC-160LH	78	21	93	174	18	7	355	20	285	145	4005-007H
VQC-200LH	75	21	95	217	18	7	405	20	385	177	4005-007AH

NEW

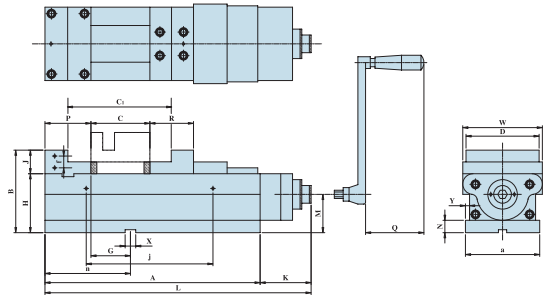


DRIVING

TOGGLE JOINT MECHANISM
DESIGN FOR HEAVY DUTY
WORKING

Features

- Compact design. Great clamping capacity & rigid.
- "Toggle joint mechanism". Provides a steady clamping force against shocks and vibrations during the operations, since it clamps the workpiece resiliently with an aid of the "disc-springs" mounted inside.
- Strong clamping force.
- Large jaw stroke range.
- Exclusive Power Vise provide same height same position for horizontal and vertical MC, NC, Machine.
- Body is made of FCD60 high quality ductile cast iron, resists deflection or bending.
- Sliding bed ways flame hardened and ground.
- Concealed spindle for protection against chips and dirt.
- Quick of clamping & locking and easy of operation.



L TYPE IS ULTRA OPEN TYPE

ORDER NO.	JAW H	JAW Open C	C1	H	MAX. Clamping Force (KN)	G.W. kg
VQC-125LC	40	205	283	140	40	40.4
VQC-160LC	50	275	361	165	60	72.3
VQC-1602LC	50	355	455	165	60	78.58
VQC-2002LC	70	405	505	190	60	108

ORDER NO.	A	B	a	D	P	R	G	H	J	K	L	M	N	Q	W	X	Y	C OPEN	C1 OPEN	f	j	n	CODE NO.
VQC-125LC	365	140	126	124.5	78	74	66	100	40	86.5	451.5	65	21	73	135	18	7	205	283	20	215	145	4005-005LC
VQC-160LC	455	165	161	159.5	86	86	58	120	45	98.5	553.5	78	21	93	170	18	7	275	361	20	285	145	4005-006LC
VQC-1602LC	535	160	162	160	86	86	58	115	45	98.5	633.5	78	21	93	174	18	7	355	455	20	285	145	4005-007LC
VQC-2002LC	615	180	202	200	102	98	74	110	70	95	710	75	21	95	217	18	7	405	505	20	385	177	4005-008LC

MC Power Vise Hydraulic Type

NEW



HYDRAULIC UNIT-
GREAT SMOOTH OPERATION

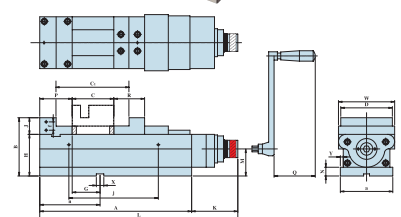
COMPACT DESIGN-
SMALL LENGTH BODY BUT
SUPER OPEN CAPACITY



HYDRAULIC TYPE HEAVY DUTY DESIGN

Features

- Compact design. Great clamping capacity & rigid. Light & smooth operation.
- Constructed for milling, drilling, machining center, grinding and many other machine shop applications.
- Body is made of FCD60 ductile cast iron, HIGH deflection/bending resistant.
- Sliding bed ways flame hardened and ground.
- Concealed spindle for protection against chips and dirt.
- Hydra-booster system for maximum clamping pressure with minimum force.
- Quick of clamping & locking and easy of operation.
- Accuracy within 0.01/100mm.
- Hydra-booster system is guaranteed for using 2 years limited.
- The hydraulic oil number is 68#



ORDER NO.	JAW H	JAW Open C	C1	H	MAX. Clamping Force (8#KN)	G.W. kg
VQC-125HC	40	205	283	140	40	42.5
VQC-160HC	50	275	361	165	60	66
VQC-160LHC	50	355	455	165	60	78.79
VQC-200LHC	70	405	505	190	60	108

ORDER NO.	A	B	a	D	P	R	G	H	J	K	L	M	N	Q	W	X	Y	C OPEN	C1 OPEN	f	j	n	CODE NO.
VQC-125HC	365	140	126	124.5	78	74	66	100	40	113.5	478.5	65	21	73	135	18	7	205	283	20	215	145	4005-005HC
VQC-160HC	455	165	161	159.5	86	86	58	120	45	125.5	580.5	78	21	93	170	18	7	275	361	20	285	145	4005-006HC
VQC-160LHC	535	160	162	160	86	86	58	115	45	125.5	660.5	78	21	93	174	18	7	355	455	20	285	145	4005-007HC
VQC-200LHC	615	180	202	200	102	98	74	110	70	122	737	75	21	95	217	18	7	405	505	20	385	177	4005-008HC



FOR HEAVY DUTY WORKING



Same height guarantee toggle joint type & hydraulic type the size same as VQC-system Page A23 & A26.



UPRIGHT TYPE

ORDER NO.	NUMBER VISE	CODE NO.
VQC-125U2	2 NO. TOGGLE JOINT TYPE	4005-040
VQC-125U4	4 NO. TOGGLE JOINT TYPE	4005-041
VQC-125HU2	2NO. HYDRAULIC TYPE	4005-042
VQC-125HU4	4 NO. HYDRAULIC TYPE	4005-043
VQC-160U2	2NO. TOGGLE JOINT TYPE	4005-044
VQC-160U4	4 NO. TOGGLE JOINT TYPE	4005-045
VQC-160LU2	2 NO. LONG WITH TOGGLE JOINT TYPE	4005-046
VQC-160LU4	4 NO. LONG WITH TOGGLE JOINT TYPE	4005-047
VQC-160HU2	2NO. HYDRAULIC TYPE	4005-048
VQC-160HU4	4 NO. HYDRAULIC TYPE	4005-049
VQC-160LH2	2NO. LONG WITH HYDRAULIC TYPE	4005-050
VQC-160LH4	4 NO. LONG WITH HYDRAULIC TYPE	4005-051
VQC-200L2	2NO. LONG WITH TOGGLE JOINT TYPE	4005-052
VQC-200L4	4 NO. LONG WITH TOGGLE JOINT TYPE	4005-053
VQC-200LH2	2NO. LONG WITH HYDRAULIC TYPE	4005-054
VQC-200LH4	4 NO. LONG WITH HYDRAULIC TYPE	4005-055



Combination MC Power Free Vise



VQC-125FV

TOGGLE JOINT POWER FORCE TYPE



VQC-125HFV

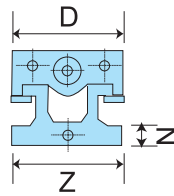
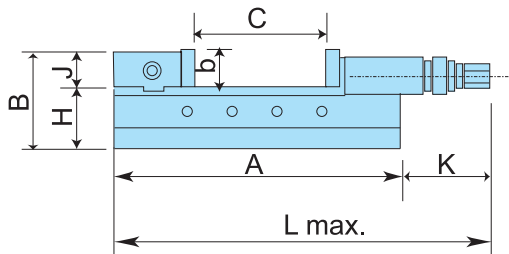
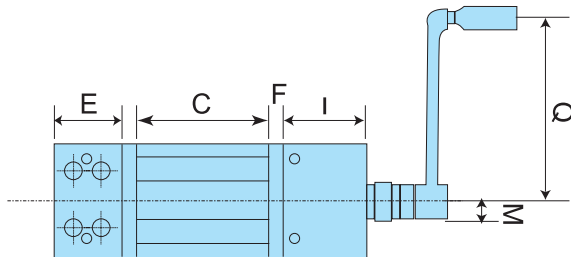
HYDRAULIC TYPE

- Heavy duty, high accuracy.
- Free style clamping, for large workpiece.
- Rigidity design, easy setting.



ORDER NO.	JAW WIDTH	JAW HEIGHT	BASE HEIGHT	GUIDE BLOCK	JAW STROKE	CLAMPING FORCE	CODE NO.
VQC-125FV	125	40	100	18	65	40KN	4005-066
VQC-125HFV	125	40	100	18	65	40KN	4005-067
VQC-160FV	275	50	120	18	70	60KN	4005-068
VQC-160HFV	275	50	120	18	70	60KN	4005-069

NEW



ORDER NO.	MAX. OPENED C	Clamping force KN	L MAX. mm	A	B	D	E	F	b	H	J	N	I	Z	weight kgs	CODE NO.
VNC-100H	205	25	464	380	103.5	99.6	67	13	34	70	33.5	24	133	100	19	4005-100
VNC-125H	225	40	556	432	126	124.6	85	15	45	82	44	27	147	125	32	4005-101
VNC-160H	309	50	684	550	148	159.6	102	18	54	95	53	27	189	160	59	4005-102
VNC-160LH	509	50	884		148	159.6	102	18	54	95	53	27	189		76	4005-103



Features

- Hydro-booster system for maximum clamping pressure with minimum force.
- Sliding bed ways flame hardened and ground.
- Compact design. Great clamping capacity. Light & smooth operation.
- Body is made of FCD60 ductile cast iron, High deflection/bending resistant.
- Constructed for machining center, milling, drilling, grinding and many other machine shop applications.



Precision Pneumatic Ang-Fixed Power Vise



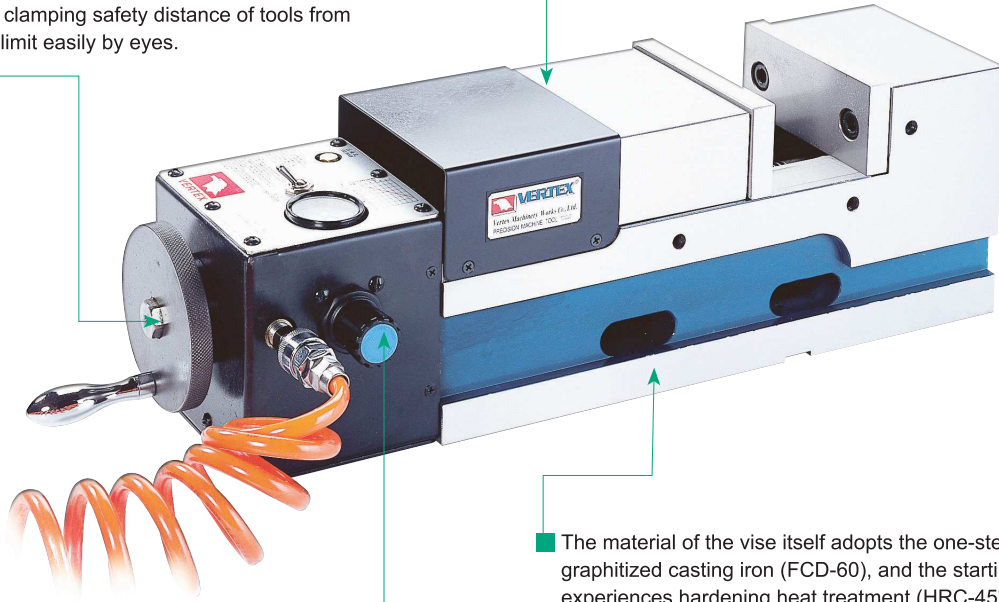
VERTEX®

Suitable for mass production and to be used on machine centers, milling machines, drilling machines and special purpose machines.

The greatest safety distance of clamping:

The switch speed is only 1.5 seconds, and the safety distance of clamping can be up to 8mm. We design the hand wheel safety line in addition for anyone to distinguish the clamping safety distance of tools from exceeding the limit easily by eyes.

Down trust "semi-spherical segment" mechanism eliminates jaw lifting and work-piece lifting.

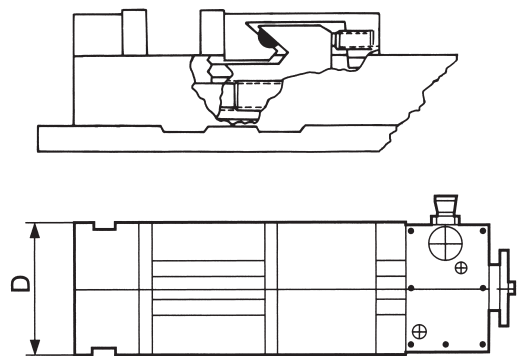
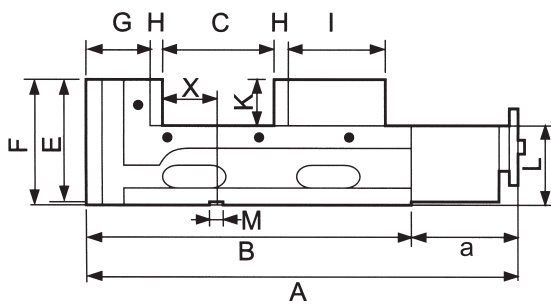


The material of the vise itself adopts the one-step design of highductility graphitized casting iron (FCD-60), and the starting rail of the two sides experiences hardening heat treatment (HRC-45*) that can assure good performance on precision, wear-resisting, and tension-resisting.

If the source of air pressure is under low pressure exertion of 8 kgf/cm², it can achieve the super strong clamping capacity of 9000 kg/cm². The clamping capacity from 0~9000 kg/cm² can be freely set and adjust via pressure regulator.

Automatically seeking the highest source of air pressure:

When the pressure regulator sets the regulator sets the required pressure, it will not be out of order because the source of air pressure is low.

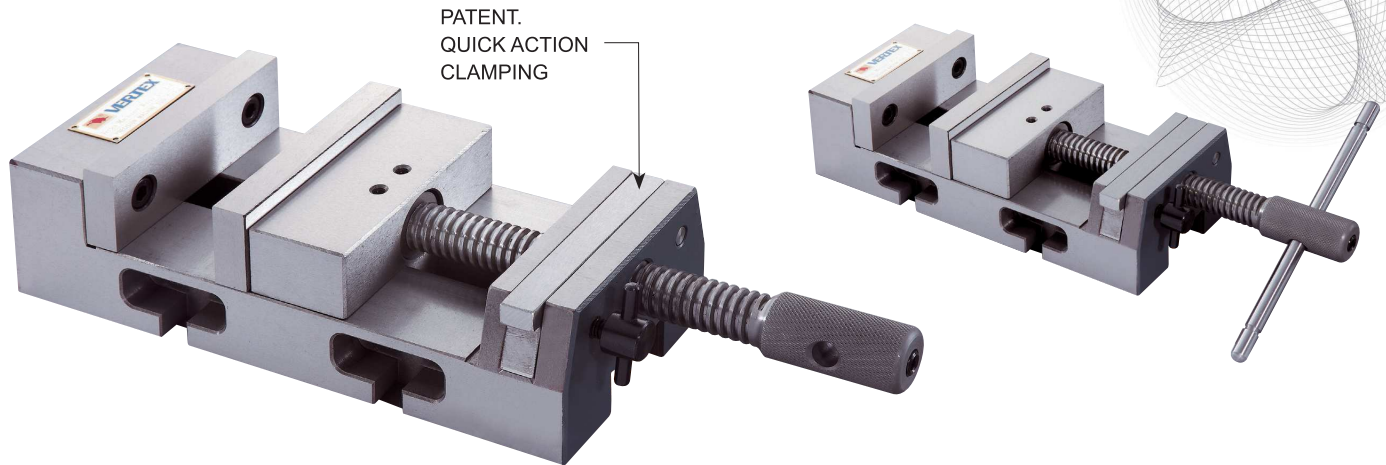


Unit:mm

ORDER NO.	A	B	a	D	E	F	G	H	I	C OPEN	K	L	M	X	Clamp Force (KN)	N.W. (kg)	G.W. (kg)	CODE NO.
VMC-5P	520	380	140	130	157	160	86	15	110	0-150	55	105	18	45	6000	38	41	4005-070
VMC-6P	540	400	140	160	160	163	86	15	120	0-160	58	105	18	45	6000	48	50	4005-071
VMC-6PL	630	490	140	160	160	163	86	15	120	0-250	58	105	18	45	6000	51	56.5	4005-072
VMC-7P	600	460	140	180	170	173	90	18	130	0-200	63	110	18	72	9000	65	66.5	4005-073
VMC-8P	610	470	140	200	170	173	90	18	140	0-200	63	110	18	72	9000	70	76.5	4005-074
VMC-8PL	710	570	140	200	170	173	90	18	140	0-300	63	110	18	72	9000	79	86	4005-075

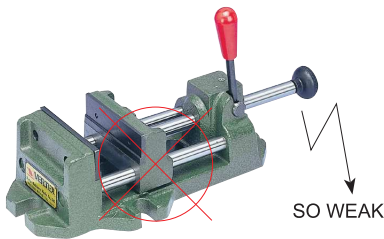
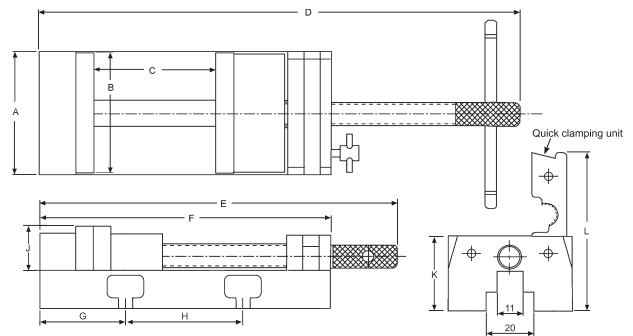


Quick Setting Vice



Features

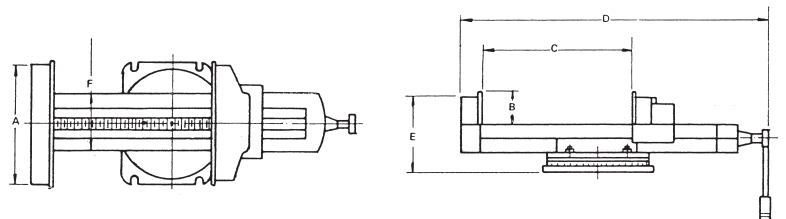
- Special design for quick clamping. (From the acme thread shaft stationly)
- Quick setting by sliding movement. Big clamping capability.
- Operating very quick and easy, can increase so much working efficiency than you can image.
- Good for short term and massive production or proto type work.
- Suit for milling machine, grinder machine, precision drilling machine using.
- Accurate grounded and assembled.
- Precision cut acme thread, it can get 900kgs high clamping force.
- Horizontal & vertical



ORDER NO.	A	B	C OPEN	D	E	F	G	H	J	K	L	Max. Clamp Force	G.W.	CODE NO.
VQS-3	82	81	85	374	288	230	75	80	34	66	120	700kgs	7	1002-262
VQS-4	106	105	104	422	317	256	78	100	36	66	135	800kgs	9.5	1002-263
VQS-5	132	131	125	490	366	297	98	100	36	68	166	800kgs	14.5	1002-264



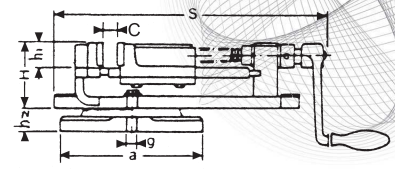
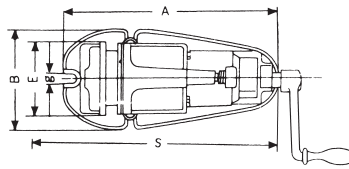
Machine Vise For Shaping & Milling Use



The vise is made of the high tension cast iron, rigidity, large range of clamping spans and more bigger clamping force at draw down jaws, especially suitable for the heavy duty cutting and the heavy duty planner milling machine to clamp large workpiece.

ORDER NO.	A	B	C OPEN	D	E	F	N.W./G.W. (KGS)	CODE NO.
VSM-12	300	70	300	650	210	220	80/83.9	1002-270
VSM-16	410	90	410	790	240	250	135/141.7	1002-271
VSM-20	500	90	500	910	250	305	175/200	1002-272

B-Type Milling Vise



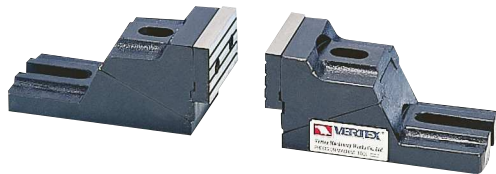
- A wider bottom to increase clamping force.
- Groove device to collect cutting oil.
- Full 360° swivel base with line, accurate graduation.

Please refer to page 11 Fig.2

Unit:mm

ORDER NO.	E	A	B	H	C OPEN	S	a	h1	h2	g1	g2	G.W. kgs	CODE NO.
VBV-4	100	270	140	79	65	305	212	33	28	12	12	13	1002-280
VBV-5	125	350	180	96	100	410	280	37	35	15	15	21.5	1002-281
VBV-6	150	400	210	105	114	460	245	40	40	16	16	38	1002-282

Free Vise



Unit:mm

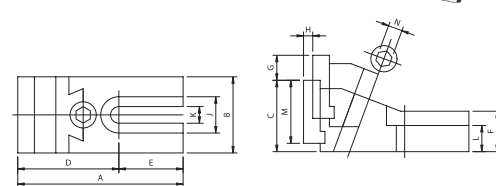
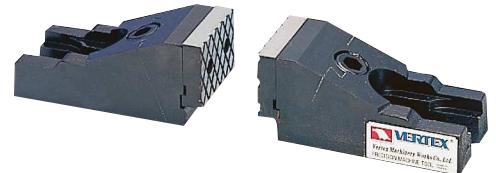
ORDER NO.	DIMENSION (WxHxL)	CLAMPING CAPACITY (HxL)	WEIGHT (kgs/2PCS)	CODE NO.
FV-350	75x67x150mm	140x350mm	7.5	1002-290
FV-450	100x90x200mm	180x450mm	14	1002-291
FV-550	125x120x250mm	250x550mm	23	1002-292

ORDER NO.	BOLT SIZE
FV-350	M12 x 75L x 2PCS. M12 x 100L x 2PCS
FV-450	M12 x 75L x 2PCS. M12 x 125L x 2PCS
FV-550	M16 x 75L x 2PCS. M16 x 150L x 2PCS

FV TYPE IS LIGHT DUTY.

- Free style clamping.

Unit:mm



ORDER NO.	A	B	C	D	E	F	G	H	J	K	L	M	N	N.W. (kgs)	CODE NO.
SV-62	139	64	59.5	85	54	33.5	21	9	30.5	14	22	52.5	12	5.8	1002-293
SV-85	192	86.5	86	115	77	53	24	10	36	18	25.5	59.5	12	11	1002-294
SV-125	218	127	84	124	94	51.5	33	18	45.5	20	23.5	73	12	21	1002-295

ORDER NO.	BOLT SIZE
SV-62	M12 x 75L x 4PCS
SV-85	M16 x 75L x 4PCS
SV-125	M16 x 75L x 4PCS

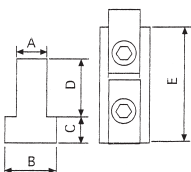
- Free style clamping.
- Heavier duty.

T Slot Clamps

For Thin Work Piece



- 1 Set consist of 4 vices.
- For thin or small workpiece.
- Good clamping force.
- Quick setting
- Suit for light duty cutting on the milling drilling / EDM machine.



ORDER NO.	A	B	C	D	E	N.W.	CODE NO.
CK-3712	11.5	18	7	16	38	0.6	1002-311
CK-3714	13.5	22	8	18	40	0.7	1002-312
CK-3716	15.5	25	8	21	45	0.9	1002-313
CK-3718	17.5	28	11	24	45	1.1	1002-314
CK-3720	19.5	32	12	26	50	1.5	1002-315



52-Pc Steel Clamping Kit



Specifications

Inch Size

ORDER NO.	Table Slot	Stud Size	G.W. kg	Meas. CFT	CODE NO.
CK-103A	7/16"	3/8"-16w	6.5	(C) 0.8	1003-009
CK-103B	1/2"		6.5		1003-010
CK-104A	9/16"	1/2"-12w 1/2"-13UNC	9.7	(C) 1.0	1003-011
CK-104B	5/8"		10.4		1003-012
CK-105A	11/16"	5/8"-11w	12.5	(C) 1.5	1003-013
CK-105B	3/4"		11.8		1003-014
CK-206	7/8"	3/4"-10w	26.5	2.0	1003-015

Metric Size

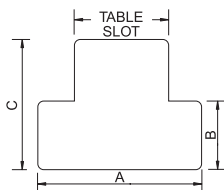
ORDER NO.	Table Slot	Stud Size	G.W. kg	Meas. CFT	CODE NO.
CK-08	10	M8-1.25P	7.4	(C) 0.8	1003-001
CK-10	12	M10-1.25P	7.6		1003-002
CK-12A	14	M12-1.75P	9.4	(C) 1.0	1003-003
CK-12B	15.7		9.5		1003-004
CK-14	16	M14-2.0P	11.1	(C) 1.5	1003-005
CK-16	18	M16-2.0P	12.6		1003-006
CK-18	20	M18-2.5P	25.3	(C) 1.6	1003-007
CK-20	22	M20-2.5P	27	(C) 2.0	1003-008

- Heat treated steel black oxide finish.
- Block size 1" (25mm). Set in plastic rack consists of:
24 pcs Studs (4 ea, 3/4/5/6/7/8 inches or 75/100/125/150/175/200mm.)
6 pcs T-Nuts
4 pcs Coupling Nuts
6 pcs Flange Nuts
6 pcs Step Clamps
6 pcs Step Blocks
- CK-18, CK-20, CK-206, Pack in wooden box.
- The parts of every specification all can be purchased individually.

INDIVIDUALLY PARTS

T-SLOT NUT

HRC 34°



Metric Size

ORDER NO.	Table Slot	Thread Size	A	B	C	WEIGHT (kg)	CODE NO.
3412M	10	M8	16	6	12	0.023	1003-020
3423M	12	M10	18	7	14	0.028	1003-021
3414M	14	M12	22	8	16	0.048	1003-022
A3424M	16	M12	25	8	16	0.06	1003-023
B3424M	16	M14	25	8	16	0.06	1003-024
3415M	18	M16	28	11	20	0.087	1003-025
3416M	20	M18	32	12	24	0.142	1003-026
3417M	22	M20	35	14	28	0.165	1003-027
3418M	28	M24	44	18	36	0.23	1003-028

Inch Size

ORDER NO.	Table Slot	Thread Size	A	B	C	Length	WEIGHT (kg)	CODE NO.
3413I	7/16	3/8-16	11/16	7/32	1/2	7/8	0.023	1003-180
3423I	1/2		7/8	9/32	1/2	7/8	0.032	1003-181
3433I	9/16		7/8	11/32	5/8	1-1/8	0.048	1003-182
3414I	9/16	1/2-12 1/2-13	7/8	11/32	5/8	1-1/8	0.048	1003-183
3424I	5/8		1	11/32	5/8	1-1/8	0.06	1003-184
3434I	11/16		1-1/8	7/16	3/4	1-1/4	0.087	1003-185
3415I	11/16	5/8-11	1-1/8	7/16	3/4	1-1/4	0.087	1003-186
3425I	3/4		1-1/4	15/32	3/4	1-1/4	0.102	1003-187
3435I	13/16		1-1/4	9/16	1	1-1/2	0.142	1003-188
3416I	13/16	3/4-10	1-1/4	9/16	1	1-1/2	0.142	1003-189
3426I	7/8		1-1/2	9/16	1	1-1/2	0.175	1003-190
3436I	1		1-5/8	5/8	1	1-3/4	0.2	1003-191
3446I	1-1/16		1-5/8	11/16	1-1/2	2	0.23	1003-192
3417I	1	7/8-9	1-5/8	5/8	1	1-1/2	0.21	1003-193
3418I	1-1/16	1-8	1-5/8	11/16	1-1/2	2	0.25	1003-194



Coupling Nut

HRC 34°



VERTEX[®]



Metric Size

ORDER NO.	Thread	Parallel	Length	Weight (kg)	CODE NO.
2612M	M8x1.25	13	22	0.033	1003-060
2613M	M10x1.5	17	25	0.035	1003-061
2614M	M12x1.75	21	32	0.065	1003-062
2614M-1	M14x2.0	21	32	0.06	1003-063
2615M	M16x2.0	26	41	0.128	1003-064
2616M	M18x2.0	32	48	0.228	1003-065
2617M	M20x2.5	32	48	0.208	1003-066
2618M	M24x3.0	41	64		1003-067

Inch Size

ORDER NO.	Thread	Parallel	Length	Weight	CODE NO.
2612I	5/16-18	9/16	7/8	0.033	1003-060I
2613I	3/8-16	11/16	1	0.035	1003-061I
2614I	1/2-12 1/2-13	7/8	1-1/4		1003-062I
2615I	5/8-11	1-1/16	1-5/8	0.128	1003-064I
2616I	3/4-10	1-1/4	1-7/8	0.22	1003-065I
2617I	7/8-9	1-7/6	1-7/8		1003-066I
2618I	1-8	1-5/8	2-1/2		1003-067I



Flange Nut

HRC 34°

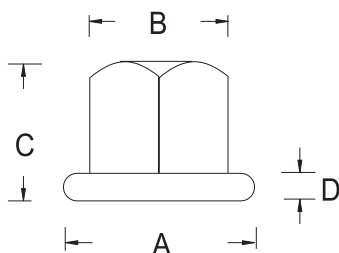


Metric Size

ORDER NO.	Thread	A	B (M/M)	C	D	Weight (kg)	CODE NO.
4512	M8x1.25	19	13	10	2	0.013	1003-050
4513	M10x1.5	22	17	12	3	0.023	1003-051
4514	M12x1.75	28	19	16	4	0.043	1003-052
4514M	M14x2.0	28	21	16	4	0.047	1003-053
4515	M16x2.0	35	26	17	5	0.087	1003-054
4516	M18x2.5	41	32	25	6	0.10	1003-055
4517	M20x2.5	44	32	35	6	0.092	1003-056
4518	M24x3.0	50	41	32	6	0.12	1003-057

Inch Size

ORDER NO.	Thread	A	B (M/M)	C	D	Weight (kg)	CODE NO.
4512I	5/16-18	3/4	9/16	3/8	3/32	0.013	1003-050I
4513I	3/8-16	7/8	11/16	1/2	1/8	0.023	1003-051I
4514I	1/2-12NC 1/2-13NC	1-1/8	7/8	5/8	5/32	0.043	1003-052I
4515I	5/8-11	1-3/8	1-1/16	11/16	3/16	0.087	1003-054I
4516I	3/4-10	1-5/8	1-1/4	1	1/4	0.092	1003-055I
4517I	7/8-9	1-3/4	1-7/16	1-1/8	1/4	0.12	1003-056I
4518I	1-8	2	1-5/8	1-1/4	1/4	0.12	1003-057I





Clamping Studs

HRC 27°



VERTEX

Heat Treated Steel

Studs

Black Oxide Finished



Metric Size

Thread																
Size	M8x1.25P		M10x1.5P		M12x1.75P		M14x2.0P		M16x2.0P		M18x2.5P		M20x2.5P		M24x3.0P	
Length mm	ORDER NO. / CODE NO.															
75	1323M 0.023kg	1003 -071	1333M 0.04kg	1003 -081	1343M 0.06kg	1003 -091	1343MA 0.07kg	1003 -101	1353M 0.09kg	1003 -111	1363M 0.12kg	1003 -120	1373M 0.15kg	1003 -140		
100	1324M 0.03kg	1003 -072	1334M 0.05kg	1003 -082	1344M 0.07kg	1003 -092	1344MA 0.10kg	1003 -102	1354M 0.13kg	1003 -112	1364M 0.16kg	1003 -121	1374M 0.20kg	1003 -141	1384M 0.25kg	1003 -150
125	1325M 0.04kg	1003 -073	1335M 0.06kg	1003 -083	1345M 0.09kg	1003 -093	1345MA 0.13kg	1003 -103	1355M 0.16kg	1003 -113	1365M 0.20kg	1003 -122	1375M 0.25kg	1003 -142	1385M 0.35kg	1003 -151
150	1326M 0.05kg	1003 -074	1336M 0.07kg	1003 -084	1346M 0.11kg	1003 -094	1346MA 0.15kg	1003 -104	1356M 0.19kg	1003 -114	1366M 0.25kg	1003 -123	1376M 0.30kg	1003 -143	1386M 0.45kg	1003 -152
175	1327M 0.06kg	1003 -075	1337M 0.09kg	1003 -085	1347M 0.13kg	1003 -095	1347MA 0.18kg	1003 -105	1357M 0.23kg	1003 -115	1367M 0.30kg	1003 -124	1377M 0.35kg	1003 -144	1387M 0.53kg	1003 -153
200	1328M 0.07kg	1003 -076	1338M 0.10kg	1003 -086	1348M 0.15kg	1003 -096	1348MA 0.20kg	1003 -106	1358M 0.25kg	1003 -116	1368M 0.32kg	1003 -125	1378M 0.40kg	1003 -145	1388M 0.60kg	1003 -154
250									13510M 0.31kg	1003 -117	13610M 0.40kg	1003 -126	13710M 0.50kg	1003 -146		
300									13512M 0.38kg	1003 -118	13612M 0.50kg	1003 -127	13712M 0.65kg	1003 -147		

Inch Size

Thread												
Size	3/8-16		1/2-12 1/2-13		5/8-11		3/4-10		7/8-9		1”-8	
Length INCH	ORDER NO. / CODE NO.											
3”	1333I 0.04kg	1003-081I	1343I 0.06kg	1003-091I	1353I 0.09kg	1003-111I	1363I 0.12kg	1003-120I	1373I 0.183kg	1003-140I		
4”	1334I 0.05kg	1003-082I	1344I 0.07kg	1003-092I	1354I 0.13kg	1003-112I	1364I 0.16kg	1003-121I	1374I 0.25kg	1003-141I	1384I 0.25kg	1003-150I
5”	1335I 0.06kg	1003-083I	1345I 0.09kg	1003-093I	1355I 0.16kg	1003-113I	1365I 0.20kg	1003-122I	1375I 0.30kg	1003-142I	1385I 0.35kg	1003-151I
6”	1336I 0.07kg	1003-084I	1346I 0.11kg	1003-094I	1356I 0.19kg	1003-114I	1366I 0.25kg	1003-123I	1376I 0.40kg	1003-143I	1386I 0.45kg	1003-152I
7”	1337I 0.09kg	1003-085I	1347I 0.13kg	1003-095I	1357I 0.23kg	1003-115I	1367I 0.30kg	1003-124I	1377I 0.45kg	1003-144I	1387I 0.53kg	1003-153I
8”	1338I 0.10kg	1003-086I	1348I 0.15kg	1003-096I	1358I 0.25kg	1003-116I	1368I 0.32kg	1003-125I	1378I 0.50kg	1003-145I	1388I 0.60kg	1003-154I
9”												
10”					13510I 0.31kg	1003-117I	13610I 0.40kg	1003-126I				
12”					13512I 0.38kg	1003-118I	13612I 0.50kg	1003-127I				
14”							13614I 0.62kg	1003-128I				
16”							13616I 0.75kg	1003-129I				
18”							13618I 0.87kg	1003-130I				
20”							13620I 1.00kg	1003-131I				



Step Clamp

HRC 37°

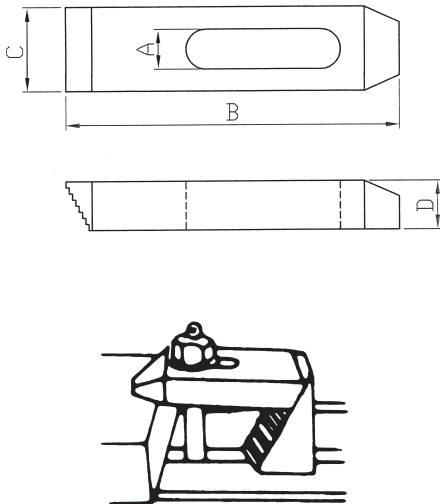


VERTEX®



Metric Size

ORDER NO.	Bolt Size	A slot	B Length	C Width	D Thickness	Weight (kg)	CODE NO.
6113M	M8 or M10	11	64	25	12	0.25	1003-030M
6123M	M8 or M10		100	25	16	0.49	1003-031M
6133M	M8 or M10		150	28	19	0.99	1003-032M
6214M	M12	14	64	28	12	0.25	1003-033M
6224M	M12		100	32	19	0.35	1003-034M
6234M	M12		150	32	22	0.60	1003-035M
6215M	M16	18	64	32	22	0.31	1003-036M
6225M	M16		100	38	19	0.85	1003-037M
6235M	M16		150	38	22	1.47	1003-038M
6316M	M20 or M18	20	100	38	19	0.75	1003-039M
6326M	M20 or M18		150	38	25	1.43	1003-040M
6336M	M20 or M18		200	44	28	2.82	1003-041M
6417M	M24	26	150	50	32	1.9	1003-042M
6427M	M24		200	50	35	2.75	1003-043M
6437M	M24		250	50	38	3.8	1003-044M



Inch Size

ORDER NO.	Bolt Size	A slot	B Length	C Width	D Thickness	Weight (kg)	CODE NO.
6113	5/16 or 3/8	11	64	25	12	0.25	1003-030
6123	5/16 or 3/8		100	25	16	0.49	1003-031
6133	5/16 or 3/8		150	28	19	0.99	1003-032
6214	1/2	14	64	28	12	0.25	1003-033
6224	1/2		100	32	19	0.35	1003-034
6234	1/2		150	32	22	0.60	1003-035
6215	5/8	18	64	32	22	0.31	1003-036
6225	5/8		100	38	19	0.85	1003-037
6235	5/8		150	38	22	1.47	1003-038
6316	3/4	20	100	38	19	0.75	1003-039
6326	3/4		150	38	25	1.43	1003-040
6336	3/4		200	44	28	2.82	1003-041
6417	7/8 or 1	26	150	50	32	1.9	1003-042
6427	7/8 or 1		200	50	35	2.75	1003-043
6437	7/8 or 1		250	50	38	3.8	1003-044



Step Block

HRC 37°



mm

STANDARD STEEL BLOCK (25 WIDE A)(31 WIDE B)				
ORDER NO.	CAPACITY OF FULL BLOCK	HEIGHT OF BLOCK	WEIGHT (kg)	CODE NO.
5114	32 to 46	30	0.14	1003-170
5124	50 to 75	48	0.28	1003-171
5134	100 to 150	97	1.245	1003-172
HEAVY DUTY STEEL BLOCK 33mm WIDE				
5215	63 to 94	63	0.53	1003-173
5225	75 to 200	75	1.72	1003-174
5235	138 to 230	138	3.25	1003-175



Ground Parallels

ORDER NO.VP-100 CODE NO.1004-001

To provide more convenient processing for milling vise.

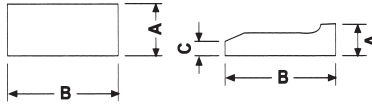


VERTEX[®]

Unit:mm



- Hardness: HRC 48°-53°
- Accuracy: 0.01mm
- Process: Four-side ground
- 1 set includes 18 pcs
- Packed by plastic case, G.W.: 11.5 kgs, Meas: 0.3 CFT.



BODY SIZE	CLAMP SIZE
AxBxLxPcs	AxBxCxLxPcs
5x16x100x2	15x31x2.5x200x2
6x18x100x2	
8x24x100x2	
10x30x100x2	
12x36x150x2	
14x48x150x2	
18x60x150x2	
22x62x150x2	



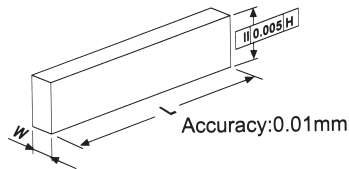
Ground Parallels

ORDER NO.VP-118A CODE NO.1004-010

8.5mm WIDTH, 5.8kgs



- Hardness: HRC 48°-53°
- MADE OF HIGH GRADE
ALLOY STEEL
HARDENED AND
GROUND.



Unit:mm

WxHxLxPcs	
8.5x14x150x2	8.5x32x150x2
8.5x16x150x2	8.5x36x150x2
8.5x20x150x2	8.5x40x150x2
8.5x24x150x2	8.5x44x150x2
8.5x30x150x2	



Ground Parallels

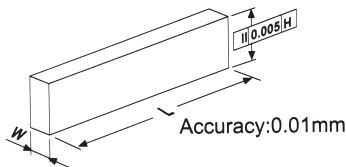
ORDER NO.VP-128A CODE NO.1004-020

28 PCS/SET 10.7kgs

VP-128A 10mm WIDTH



- Hardness: HRC 48°-53°
- MADE OF HIGH GRADE
ALLOY STEEL
HARDENED AND
GROUND.



Unit:mm

WxHxLxPcs	
10x14x150x2	10x28x150x2
10x16x150x2	10x30x150x2
10x18x150x2	10x32x150x2
10x20x150x2	10x35x150x2
10x22x150x2	10x40x150x2
10x24x150x2	10x45x150x2
10x26x150x2	10x50x150x2



Precision Parallels

ORDER NO.VP-136 CODE NO.1004-030

To provide more convenient processing for milling vise

- Hardness: HRC 48°-53°



ACCURACY:0.01mm

WIDTH 8.0mm

36 PCS/SET 12.3kgs

Unit:mm

WxHxLxPcs	
8x16x150x2	8x34x150x2
8x18x150x2	8x36x150x2
8x20x150x2	8x38x150x2
8x22x150x2	8x40x150x2
8x24x150x2	8x42x150x2
8x26x150x2	8x44x150x2
8x28x150x2	8x46x150x2
8x30x150x2	8x48x150x2
8x32x150x2	8x50x150x2



VP-018 Thin Type Parallels Set

ORDER NO.VP-018 CODE NO.1004-040

- Hardness: HRC 48°-53°



3Wx150Lx20 PCS/SET

G.W. 2.2kgs.

PACKING: 175x65x200 mm

ACCURACY: 0.01mm

THICKNESS 1/8" \div 3mm

WxHxLxPcs	WxHxLxPcs
3x13x150x2	3x28x150x2
3x16x150x2	3x31x150x2
3x19x150x2	3x35x150x2
3x22x150x2	3x38x150x2
3x25x150x2	3x41x150x2



VP-163 Precision Parallels

ORDER NO.VP-163 CODE NO.1004-050

- Hardness: HRC 48°-53°



5Wx150Lx8 PCS/SET

G.W. 1.7kgs.

PACKING: 100x65x175 mm

ACCURACY: 0.01mm

THICKNESS 3/16" \div 5mm

WxHxLxPcs
5x25x150x2
5x31x150x2
5x38x150x2
5x44x150x2



VP-064 Precision Parallels

ORDER NO.VP-064 CODE NO.1004-060

- Hardness: HRC 48°-53°



6Wx150Lx18 PCS/SET

G.W. 4.5kgs.

PACKING: 210x178x68 mm

ACCURACY: 0.01mm

THICKNESS 1/4" \div 6mm

WxHxLxPcs	WxHxLxPcs
6x19x150x2	6x35x150x2
6x22x150x2	6x38x150x2
6x25x150x2	6x41x150x2
6x28x150x2	6x44x150x2
6x31x150x2	



VP-050 Precision Parallels

ORDER NO.VP-050 CODE NO.1004-070 13Wx150Lx8 PCS/SET

- Hardness: HRC 48°-53°



G.W. 4.5kgs.
PACKING: 180x70x310 mm
ACCURACY: 0.01mm
THICKNESS 1/2" \div 13mm

WxHxLxPcs
13x25x150x2
13x31x150x2
13x38x150x2
13x44x150x2



VP-033 Precision Parallels

ORDER NO.VP-033 CODE NO:1004-080

- Hardness: HRC 48°-53°



G.W. 6.2kgs.
PACKING: 180x65x230 mm
LONGER TYPE,
SUIT FOR BIGGER VISE.

200Lx8 PCS/SET
Accuracy: 0.01 mm

WxHxLxPCS
8x24x200x2
12x36x200x2
22x40x200x2
31x15x200x2x2.5 For Clamping



VP-146 Ground Parallels

ORDER NO.VP-146 CODE NO:1004-082

NEW



G.W. 3kgs.
Material: S45C
Hardness: HRC48°-53°

4.6Wx150Lx12 PCS/SET
Accuracy: 0.01 mm

WxHxLxPCS
4.6x32x150x2
4.6x34x150x2
4.6x36x150x2
4.6x38x150x2
4.6x40x150x2
4.6x44x150x2



VP-168 Ground Parallels

ORDER NO.VP-168 CODE NO:1004-083

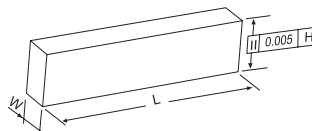
NEW



G.W. 3.5kgs.
Material: S45C
Hardness: HRC48°-53°

6.8Wx150Lx14 PCS/SET
Accuracy: 0.01 mm

WxHxLxPCS
6.8x15x150x2
6.8x18x150x2
6.8x21x150x2
6.8x25x150x2
6.8x27x150x2
6.8x31x150x2
6.8x35x150x2





VP-200 Ground Parallels

ORDER NO.VP-200 CODE NO.1004-085



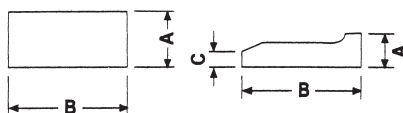
VERTEX

NEW



MADE OF HIGH GRADE
ALLOY STEEL
HARDENED AND
GROUND.
ACCURACY: 0.01/100 MM

- Hardness: HRC 48°-53°

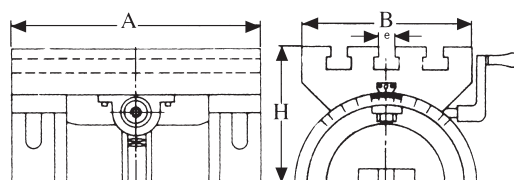


FOR OVER 150 mm, 200mm/m
JAW PLATE VISE USING

BODY SIZE	CLAMP SIZE
AxBxLxPcs	AxBxCxLxPcs
5x16x150x2	31x15x200x2x2.5
6x18x150x2	
8x24x150x2	
10x30x150x2	
12x36x200x2	
14x48x200x2	
18x60x200x2	
22x62x200x2	



Adjustable Angle Plate



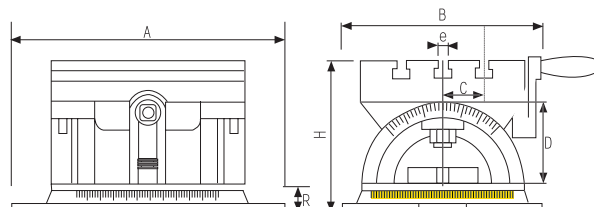
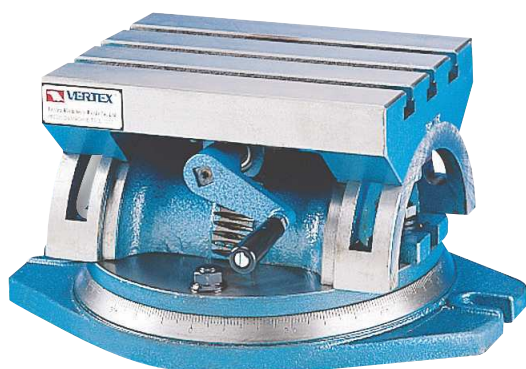
Unit:mm

ORDER NO.	TABLE LxW			T-SLOT	APPROX WEIGHT(kg)	CODE NO.
	A	B	H	e		
VP-180	180	130	91	10	7.5	1004-089
VP-250	255	181	133	12	29	1004-090
VP-380	380	254	185	16	56.5	1004-091
VP-600	600	300	205	16	85.5	1004-092

1. For angle setting on various machine tools.
2. Adjustable 45° each side.
3. Material: FC30
4. Lower plate and bigger working space.



Angle Plate With Swivel Base



Unit:mm

ORDER NO.	Table LxW			T-SLOT			R	WEIGHT (kg)	CODE NO.
	A	B	H	e	C	D			
VP-250S	243	230	177	10	50	90	40	40	1004-100
VP-380S	360	270	233	12	68	127	48	76	1004-101

360° SWIVEL BASE.



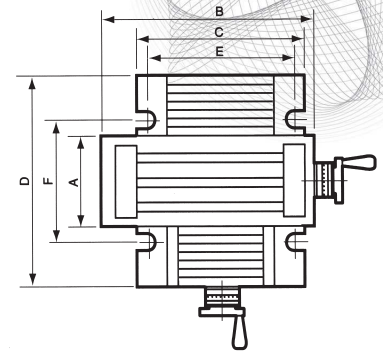
Precision Cross Table



VCT-407



VCT-514



- Material: over FC-30
- Precision: 0.02/100mm
- Feature: The sliding surfaces are treated by heat-treatment & precision ground
- Can be used as measurement table

Specifications

Unit:mm

ORDER NO.	A	B	C	D	E	F	Stroke	T Slot	Total height	Dial graduation	PACKING LxWxH m/m	WEIGHT kgs	CODE NO.
VCT-407	100	180	130	100	115	50	50x80	3/8"	100	2.5mm/0.02	290x240x140	12	1007-001
VCT-514	150	350	250	300	206	208	156x170	3/8"	134	4mm/0.02	510x450x240	33.5	1007-002
VCT-820	200	500	300	400	250	290	200x250	3/8"	155	4mm/0.02	640x520x200	72	1007-003
VCT-1024	250	600	400	500	340	430	250x300	1/2"	210	4mm/0.02	790x680x310	141	1007-004



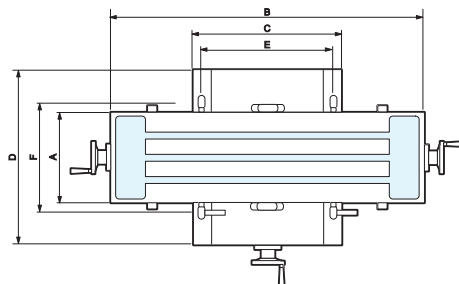
Precision Cross Table

ORDER NO.VCT-830 CODE NO.1007-010



VCT-830

A heavy, rugged slide in all kinds of positioning, milling, drilling micro-scope viewing and staging, adjustable bases for heavy loads, small jig boring, precision cut-off.



Specifications

Unit:mm

ORDER NO.	A	B	C	D	E	F	Stroke	T Slot	Total height	Dial graduation	PACKING LxWxH m/m	WEIGHT kgs	CODE NO.
VCT-830	210	730	345	405	305	230	190x350	16	185	2.5mm/0.05	991x584x292	100	1007-010



Cross Table

ORDER NO.VCT-512 CODE NO.1007-020



VCT-512

Table: 300x140mm

Height: 115mm

Travel: 200mm longitudinal.

125mm transverse.

Base: 225mm x 200mm oval with U slots for up to 16 bolts on 190 to 210 bolts circle.

Dial Graduated: 0.03mm

Net weight: 16.5kgs.

Packing Volume of each unit: 430x265x155mm

LIGHT DUTY ONLY

Right Angle Head

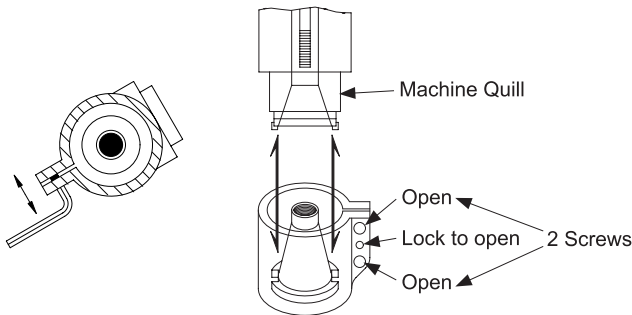


VRA-TYPE

- Used on Vertical Milling Machine to make horizontal work.
- Rigidity constructed suitable for horizontal cutting.
- The clamping bushing to suit milling machine.
- Maximum spindle speed allowed right angle. 2000 R.P.M.

※ Please notify the quill dia. when ordering

ORDER NO.	SUITABLE MILLING HEAD QUILL DIAMETER	WEIGHT (kgs)	CODE NO.
VRA-R8	85.725mm~86mm	12.5	1008-001
VRA-NT 30	85.725mm~86mm	13	1008-002
VRA-NT 40	85.725, 100, 105, 110, 115mm	18	1008-003



- Loose 2 screws to match with machine.
- Tighten 2 screws to fix on quill D.
- Assemble with milling quill dia.

ARBOR FOR CUTTER INCH OF MERTIC SIZE

VRA-R8	R8-SCA1"	R8-SCB22
VRA-NT 30	NT30-SCA1"	NT30-SCB27
VRA-NT 40	NT40-SCA1"	NT40-SCB27

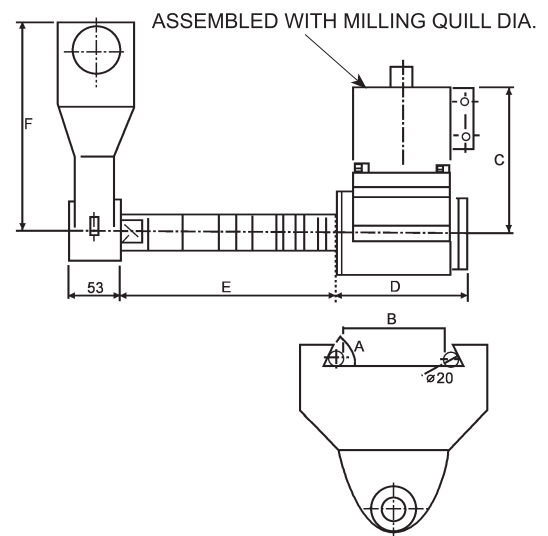
Horizontal Milling Attachment



- Special dovetail degree, also can supply....please notify.
- VHA-TYPE including right angle head, long horizontal arbor and breaker. VHA-R-8-27mm VHA-NT-30/NT-40-27mm for The mm size, for inch size are same 25.4mm (1")
- The quill diameter is same as VRA-Type
- Maximum spindle speed allowed right angle. 2000 R.P.M.

Horizontal Milling Arbor Support

TYPE	SPEC.	SUITABLE M/C RAM DOVETAIL WIDTH	WEIGHT(kgs)
A 50°		B 140mm~170mm	25.7
A 55°		B 140mm~170mm	26.5
A 60°		B 140mm~170mm	30.8



- Benefit: convert your vertical mill to a horizontal mill. Designed to simplify right angle work by reducing the need for special tooling and complex fixtures, gains your efficiency, save your time and money.

Unit:mm

ORDER NO.	C	D	E	F	CODE NO.
VHA-R-8	175	138	255	233	1008-010
VHA-NT-30	175	160	270	233	1008-011
VHA-NT-40	183	190	270	233	1008-012



Power Table Feed -

Super Power Type
500SX, 500SY, 500SZ Series



VERTEX



For Longitudinal X Axis



For Cross Y Axis



For Vertical Z Axis

500S Type series

VPF-250X

VPF-250Y

VPF-250Z

The VERTEX vertical milling machines-model: VTM-2S/2V/3V/4V/5V and all milling machine without gearbox table feed device. All type milling/drilling machines high torque. Easy installation. Automatic shutoff. Superior thermal characteristic. Smooth operations. Safety option. Trouble-free performance. super power.

The max. torque is 650 in/lb

- New super power design and construction materials.
- Top quality. Long life span designed.



VPF-235

Features

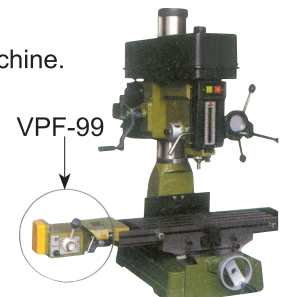
- The VERTEX power table feed for 2V, 3V, 5V milling machine.
- Easy to install, no modification needed.
- Highest quality design and construction materials.
- Circuit panel is designed with easily replaceable insert type connectors.
- Assy-gear (nylon) clutch has built in torque release to prevent damage to shaft and metal gear if too much resistance is met.



VPF-99

Features

- Application: the VERTEX power table feed for Drill/Milling machine.
- Easy to install, no modification needed.
- Highest quality design and construction.
- Circuit panel is designed for easy replacement with insert type connectors.
- Assy-gear clutch has limit for twisting: When power feed is working and accepting tremendous obstacle, the assy-gear clutch will automatically become natural turning in order to reduce damage.



OPTIONAL

Transformer 110V 220V

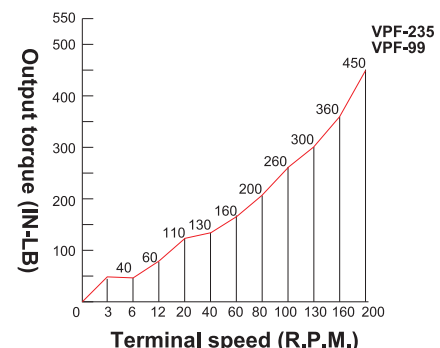
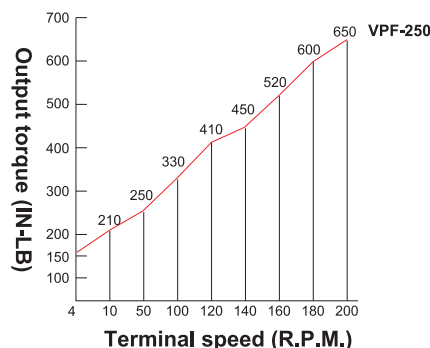
ORDER NO. VPF-TF

CODE NO. 1009-006

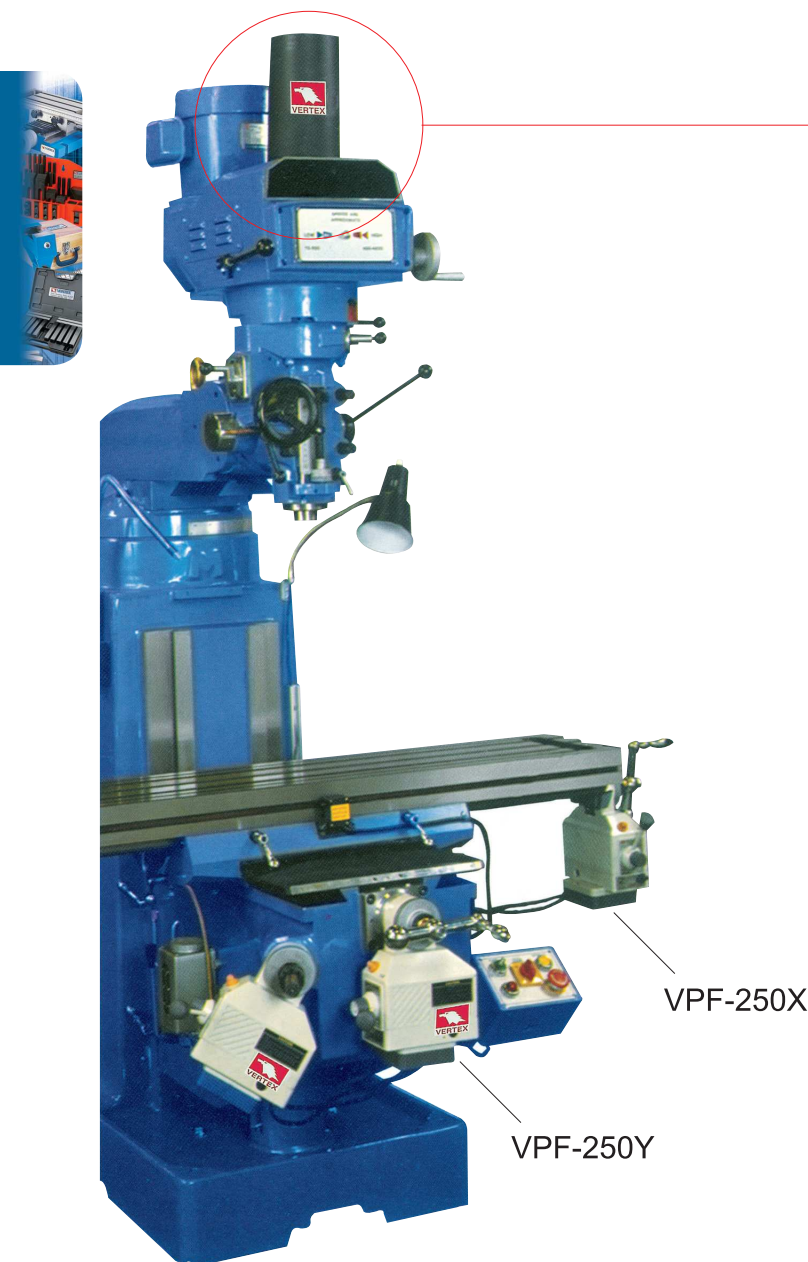
TR1: Output TR2:2 Output

Output: 110V 50/60Hz,
power supply: 50/60Hz, 1-phase
220, 240, 380, 415, 440V

THIS TRANSFORMER IS
FOR VPF-TYPE USE ONLY.



ORDER NO.	VOLTAGE	Speed Range	Rapid Speed	Max. Torque	LxWxH	G.W.(kgs)	CODE NO.
VPF-250 x	110V	4-160rpm	200rpm	650 in/lb	290x200x320mm	6.3	1009-001
VPF-250 y						6.7	1009-002
VPF-250 z						6.9	1009-003
VPF-235 x	110V	0-140rpm	200rpm	440 in/lb	290x200x320mm	6.2	1009-004
VPF-99 x	110V	0-165rpm	240rpm	450 in/lb	290x200x315mm	6.2	1009-005



- It will increase your productivity with more profits as cutter replacement needs only 3 sec and the speed of replacement is more than 10 times to compare with traditional cutter replacement.

Air power drawbar PD-150, PD-200

- It can be installed in any kind of machine, of which the main spindle are R-8, NT #30, #40 or #50.
- It is convenient for the machinist who wants increased production and performance from his machine.
- It is suitable for NC and general milling machines.
- This device is easily installed needs only 5 seconds to change the cutting tool.
- Main power is air compression.
- This device is designed with safety device controlled with solenoid valve. The power drawbar cannot be operated while machine is running.

Standard equipment

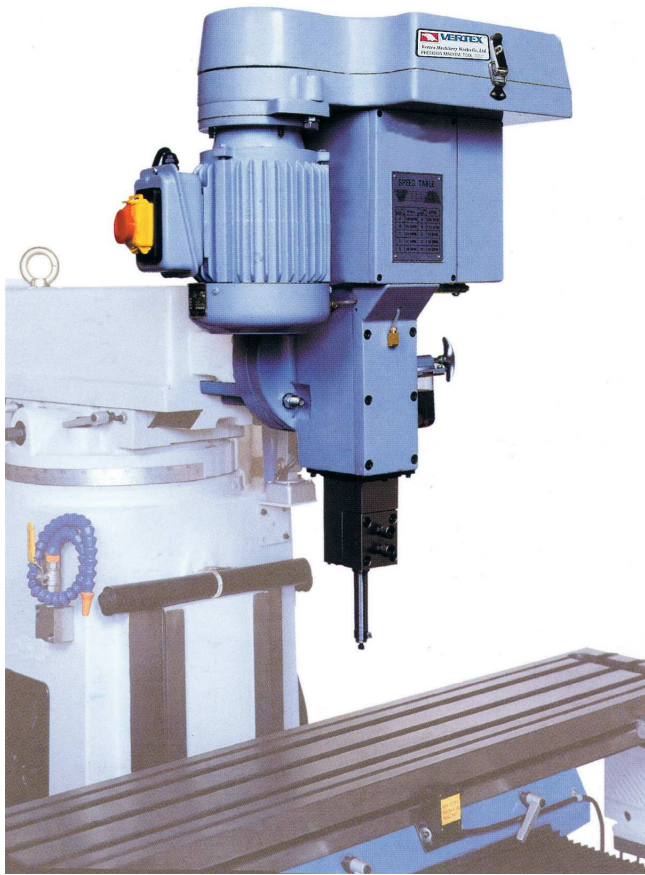
- Power motor
- Control box
- Air filter and lubricant
- Drawbar
- Mounting hardware

ORDER NO.		SPEED	TORQUE	AIR PRESSURE	VOLTAGE FOR MAGNETIC VALVE	G.W. kgs	PACKING LxWxH	CODE NO.
PD-150 FOR	R-8	3000 R.P.M.	150 ft-lb	90 psi 6.3 kg/cm ²	AC 110V OR 220V DC 24V	9.8	650x300x200	1010-001
	NT-30							1010-002
	NT-40							1010-003
PD-200 FOR	NT-50	3000 R.P.M.	200 ft-lb	90 psi 6.3 kg/cm ²	AC 110V OR 220V DC 24V	11	650x300x200	1010-004



Precision Slotting Head

ORDER NO.VSH-125 CODE NO.1012-010



Features

- Special design worm and worm gear with linkage transmission mechanism, well construction and highly power output.
- The ram-sliding surface are hardened and precision ground
- Built in lubricating system for smoothly running and prolong the life of head
- Available mounting on any type milling m/c back side of the ram.

Specification

Stroke: 125mm (5")

No. of stroke speed change: 5 steps

Stroke speed (stroke/min): 30, 47, 69, 98, 140 spm (50HZ)

Stroke speed (stroke/min): 35, 54, 79, 112, 160 spm (60HZ)

Driving Motor: 3/4HP-6P

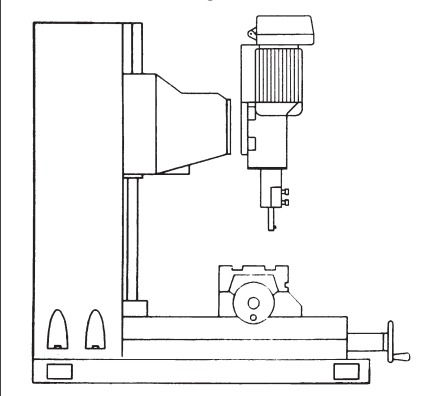
WEIGHT: 150kgs

Optional Accessories

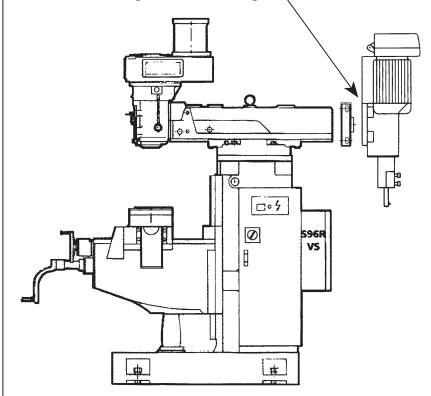
- Flange A
- Flange B
- Slotting bar & cutter 4, 5, 6, 7, 8, 10mm

ORDER NO.	CUTTER & DESCRIPTION	WEIGHT (kg)	CODE NO.
VSH-4C	Slotting bar 4mm	0.32	1012-011
VSH-5C	Slotting bar 5mm	0.32	1012-012
VSH-6C	Slotting bar 6mm	0.56	1012-013
VSH-7C	Slotting bar 7mm	0.62	1012-014
VSH-8C	Slotting bar 8mm	0.80	1012-015
VSH-10C	Slotting bar 10mm	0.81	1012-016
VSH-FGA	FLANGE A	11	1012-017
VSH-FGB	FLANGE B	23	1012-018

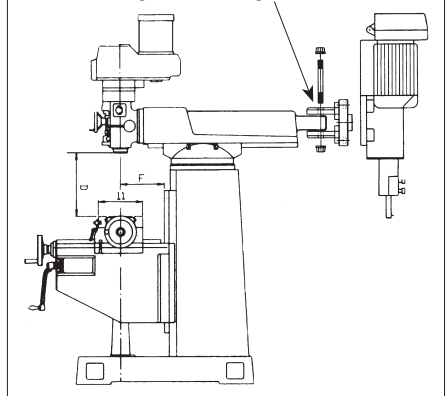
1. Direct mounting



2. Mounting with flange A



3. Mounting with flange B

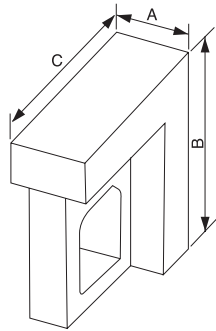




Precision Right Angle Plate



VERTEX



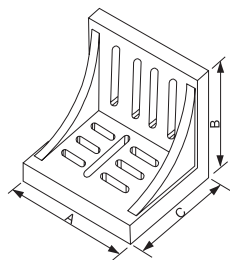
- Made of finest quality castings, stress relieved.
- All outside surfaces closely finished for square and parallel references:
Precision ground: Square within 0.01mm per 100mm
Parallel within 0.01mm per 100mm

Unit:mm

ORDER NO.	Approx Dimensions			WEIGHT (kgs)	CODE NO.
	A	B	C		
VRH-4	102	126	150	6.3	1013-001
VRH-5	126	202	300	16.9	1013-002
VRH-6	150	150	202	14.5	1013-003
VRH-8	202	250	300	32.5	1013-004



Right Angle Plate



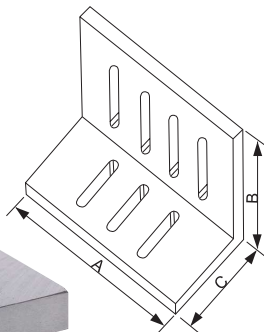
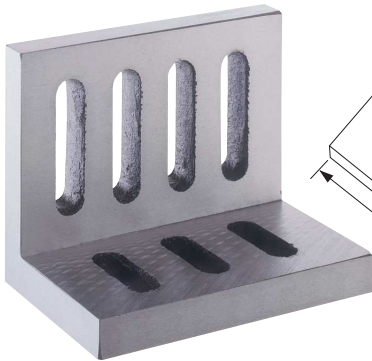
- Made of high tensile cast iron
- Webbed style accurately grounded, square and parallel on outside faces and ends within 0.01mm per 100mm

Unit:mm

ORDER NO.	Approx Dimensions			WEIGHT (kgs)	CODE NO.
	A	B	C		
VR-6	150	126	115	3.8	1013-010
VR-8	202	150	126	7.4	1013-011
VR-10	250	202	126	12.1	1013-012
VR-12	300	228	202	23.7	1013-013



Slotted Angle Plates

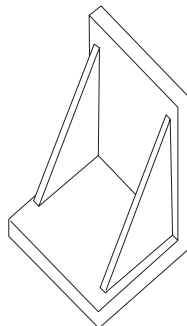
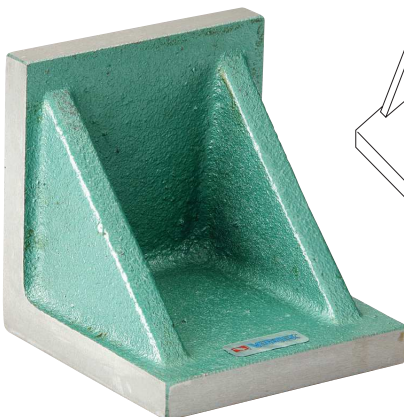


- Many size also stocked with precision ground finish, prices on request.
- Made of high tensile cast iron properly seasoned against distortion. Open end style accurately machined square and parallel on all faces.

ORDER NO.	Approx Dimensions			APPROX WEIGHT (kgs)	CODE NO.
	A	B	C		
VR-45	4-1/2"	3-1/2"	3"	1.3	1013-020
VR-60	6"	5"	4-1/2"	3.2	1013-021
VR-80	8"	6"	5"	7.4	1013-022
VR-100	10"	8"	6"	12	1013-023
VR-120	12"	9"	8"	19.4	1013-024



Plain Angle Plates



Machined or precision ground

- Made from high tensile cast iron - normalized and stress relieved.
- Machined: Flat and square within .002" per 6" for general work.
- Precision ground: Flat and square within .0005" per 6" for layout and inspection or precision machining.

ORDER NO.	Size in inches	APPROX WEIGHT (kgs)	CODE NO.
VR-22	2x2x2	0.4	1013-030
VR-33	3x3x3	1.2	1013-031
VR-44	4x4x4	2.5	1013-032
VR-55	5x5x5	4.3	1013-033
VR-66	6x6x6	7	1013-034
VR-88	8x8x8	15.2	1013-035
VR-1010	10x10x10	27.7	1013-036
VR-1212	12x12x12	42.9	1013-037



Screw Jack



VERTEX

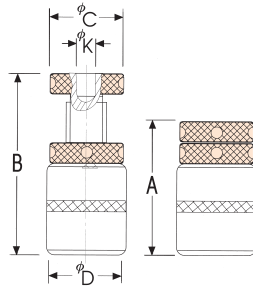


- Material: S45C
- Support heavy weight

ORDER NO.	ADJUSTABLE CAPACITY	ØD	K.G.	CODE NO.
VSJ-40	40-55mm	38	0.3	1014-000
VSJ-70	70-95mm	38	0.4	1014-001
VSJ-150	100-150mm	50	1.1	1014-002
VSJ-250	140-230mm	53	2.3	1014-003
VSJ-500	280-375mm	73	4.6	1014-004



Screw Jack With Magnets



- Cross type fixture gives best positioning.
- Heat treatment in parts contact face.
- Built-in magnets designed, easy to clean chips.

ORDER NO.	A	B	C	D	K	K.G.	CODE NO.
VSJM-50	40	50	35	40	11.5	0.4	1014-010
VSJM-70	50	65	35	40	11.5	0.5	1014-011
VSJM-85	65	85	40	45	11.5	0.7	1014-012
VSJM-110	85	110	40	45	11.5	0.8	1014-013
VSJM-165	110	165	45	50	11.5	1.4	1014-014



Screw Jack Sets

NEW



SUITABLE FOR IRREGULAR WORKPIECE.
RAPID SETTING & FIXED.

PADS:



VSJ-1A



VSJ-2A



VSJ-3A



VSJ-4A



VSJ-5A



VSJ-6A

6 PADS For different work piece shape

ORDER NO.	SIZE	CODE NO.
VSJ-1A	Ø25xØ11x10mm	1014-030
VSJ-2A		1014-031
VSJ-3A		1014-032
VSJ-4A		1014-033
VSJ-5A		1014-034
VSJ-6A		1014-035

ORDER NO.	SET INCLUDING		WEIGHT K.G.	CODE NO.
	JACKS	PARTS EACH ONE		
VSJ-A	VSJ-70x2 VSJ-150x2	VSJ-1A, VSJ-2A, VSJ-3A VSJ-4A, VSJ-5A, VSJ-6A	4.0	1014-020
VSJ-B	VSJ-150x2 VSJ-250x2	VSJ-1A, VSJ-2A, VSJ-3A VSJ-4A, VSJ-5A, VSJ-6A	7.5	1014-021

U-Clamp



- Material: S45C
- Easy adjustment

ORDER NO.	STUD	LxWxH	K.G.	CODE NO.
VCA-404	M12x5"	105x45x35mm	1.5	1015-001
VCA-405	M16x6"	126x54x40mm	2.6	1015-002
VCA-406	M20x7"	155x58x55mm	4.2	1015-003
VCA-408	M24x8"	190x70x65mm	8.2	1015-004

Pivot Clamp



- The clamping height is adjustable
- With brass plate under the clamp arm for protecting the working material from damage
- By using spherical Flange nut, it will be assured to clamp the material tightly
- The clamping arm is forged
- Material: S45C

ORDER NO.	Table T-Slot Size	Stud X L Size	Body	Clamping height	G.W.	CODE NO.
VCB-404	16	M12x5"	115x42x39	0 or 3 1/2"	1.6	1015-005
VCB-405	20	M16x6"	133x50x49	0 or 4"	2.7	1015-006
VCB-406	22	M20x7"	157x60x54	0 or 4 3/4"	4.6	1015-007
VCB-408	28	M24x8"	7x2 7/8	0 or 6"	8.6	1015-008

Hand Drift

ORDER NO.VHD-1 CODE NO.1016-001



An essential tool for machinery processing

Specially applied for: Vertical drill, radial drill, compounding miller, boring miller, and any drill drifting, etc.

- Easy and fast operation.
- Enhance the working efficiency.
- Protect toolings to be safe.
- Economical, practical & durable.

Suit For Spindle Notes	Length	30pcs/Box Size	30pcs/ Carton Size	N.W.(kg)
M.T.#2 #3 #4 #5	375mm	385x45x37mm	390x270x240mm	1.3



Eye Shield

ORDER NO.VH-56 CODE NO.1017-001

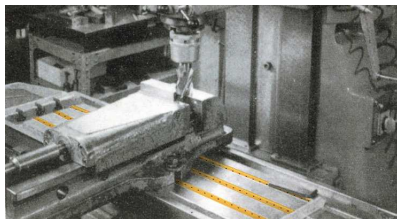


- The clamping height is adjustable
With brass plate under the clamp arm for protecting the working material from damage

GUIDER SIZE	K.G.
300x180x2	1



Milling Table Slot Cover



- Save time cleaning chips from machine
- Protects table slots
- Prevents chips from interfering with coolant flow
- Made of hand anodized aluminum, Light weight.

ORDER NO.	Table Slot	L	Set	WEIGHT(kg)	CODE NO.
VST-10	10	300	6PCS	0.1	1018-011
VST-12	12	400	6PCS	0.4	1018-012
VST-14	14	400	6PCS	0.5	1018-013
VST-16	16	400	6PCS	0.5	1018-001
VST-18	18	450	6PCS	0.6	1018-002
VST-20	20	500	10PCS	1	1018-003
VST-22	22	1000	5PCS	1.1	1018-004
VST-24	24	1000	5PCS	1.2	1018-005
VST-28	28	1000	5PCS	1	1018-006
VST-36	36	1000	5PCS	1.1	1018-007



Vee Blocks



MACHINED ONLY

Material: High quality close-grained cast iron, stress-relieved.

Accuracy: Machining to 0.03mm/100mm

ORDER NO.	Length	Width/Set	Height	V-Width	V-Depth	Weight(kgs)/Set	CODE NO.
V-2V	51mm	48mm	32mm	25mm	12.5mm	0.5	1019-001
V-3V	76mm	62mm	53mm	34mm	17mm	1.5	1019-002
V-4V	102mm	82mm	60mm	48mm	24mm	2.5	1019-003
V-5V	126mm	102mm	79mm	58mm	29mm	4.3	1019-004
V-6V	150mm	124mm	88mm	80mm	40mm	6.4	1019-005
V-7V	178mm	152mm	115mm	92mm	46mm	12	1019-006
V-8V	202mm	174mm	140mm	114mm	57mm	16.7	1019-007



Auto Center Punch

ORDER NO.VACP-1 CODE NO.1019-020



L: 120MM

Automatic point marker is the best tool final the central point before punching. It's operated to aim at the central line and be pressed downward; the central point will appear. The size of the point can be adjusted by the pressure lid, no need to use hammers.

- G.W. : 0.1kgs



ORDER NO.	DRAW BAR THREAD	LENGTH mm		WEIGHT (kg)	CODE NO.
		STEPS (S) TYPE	VARIABLE (A) SPEED		
VDR-R8-S	7/16-20NC	518	598	0.5	1020-001
VDR-R8-A				0.8	1020-002
VDR-NT302-S	1/2-12NC	555	635	0.6	1020-003
VDR-NT302-A				0.9	1020-004
VDR-NT303-S	1/2-13NC	555	635	0.6	1020-005
VDR-NT303-A				0.9	1020-006
VDR-NT30M-S	M12x1.75P	555	635	0.6	1020-007
VDR-NT30M-A				0.9	1020-008
VDR-NT40I-S	5/8-11NC	545	630	1	1020-009
VDR-NT40I-A				1.3	1020-010
VDR-NT40M-S	M16x2.0P	545	630	1	1020-011
VDR-NT40M-A				1.3	1020-012

Expandable Machine Guard Cover



F IS FOR FRONT (X)
B IS FOR BACK (Y)
(MILLING MACHINE)
B SERIES RUBBER IS PLANE TYPE.

ORDER NO.	WxL	SUITFUL MILLING SINE	WEIGHT (kg)	CODE NO.
VGC-3833F	380x330	1.5#	0.3	1021-001
VGC-3860F	380x600	1.6# 1.7#	0.6	1021-002
VGC-4550F	450x500	1.6#	0.7	1021-003
VGC-3775B	370x750	1.5#	0.7	1021-004
VGC-4585B	450x850	1.6# 1.7#	1.1	1021-005
VGC-6085B	600x850	2.0#	2	1021-006

5C. C32. OZ25 Collet Rack

ORDER NO.VMS-5 CODE NO.1021-050



SIZE: 220x110x6 mm
MATERIAL: PLASTIC
G.W.: 0.2 kgs

Parts Storage

COLOR: RED, BLUE, YELLOW



ORDER NO.	SIZE	PACKED	EACH WEIGHT (kg)	CODE NO.
VHB-1218	120Wx180Dx80H mm	60 PCS/CASE	8.6	1021-100
VHB-1525	150Wx250Dx120H mm	36 PCS/CASE	9.6	1021-101
VHB-2035	200Wx350Dx150H mm	18 PCS/CASE	0.585	1021-102
VHB-2045	200Wx450Dx177H mm	12 PCS/CASE	0.8	1021-103
VHB-3045	300Wx450Dx177H mm	8 PCS/CASE	1.8825	1021-104
VHB-1015	100Wx150Dx80H mm	80 PCS/CASE	0.074	1021-105
VHB-1220	120Wx200Dx80H mm	60 PCS/CASE	6.7	1021-106
VHB-1526	150Wx260Dx128H mm	36 PCS/CASE	0.201	1021-107



Universal Cutter Grinder

ORDER NO.U2 CODE NO.1022-001



For grinding HSS and carbide engraving cutter as well as single lip or multiple lip cutters of various shapes such as radius cutters or negative taper angle of cutters. The universal index head is provided at 24 positions so that any particular angle or shape can be obtained, free 3600 or 100 rotation is allowed for grinding End Mills. Twist Drill. Lathe Tools, only replace the attachment to the index head without any complex setup.

Technical Data

Max. Collet capacity Ø18mm

Max. Grinding dia. Ø25mm

Taper angle 0°-180°

Relief angle 0°-45°

Negative angle 0°-26°

Grinding spindle 3600 r.p.m.

Cup grinding wheel 100x50x20mm

Motor 1/3Hp 220V50/60Hz, please notify volt & phase

Net weight 45kgs

G.W.: 58kgs

Machine dimensions (LxWxH) 45x40x35cm

Packing Dimensions (LxWxH) 55x45x47cm

Standard Accessory Included

- Wheel dresser with diamond..... 1pc
- Wheel flange (mounted)..... 1pc
- Grinding wheel..... 1pc (U2-G)
- Collet Ø4, 6, 8, 10 12mm..... 5pc
- Aligning finger..... 1pc
- Drive belt (U2-B)..... 1pc (U2-B)
- Lock pin..... 1pc
- Tools..... 1set

Optional Accessory

- Twist drill grinding attachment U2-T
 - END mill grinding attachment U2-E
 - Lathe tool grinding attachment U2-L
 - Grinding wheel balancing stand LBS-100 CODE NO. 2014-010
 - Diamond grinding wheel U2-D
 - Resinoid Diamond & CBN Wheels U2-R
 - Collect (extra 1, 2, 2.5, 3, 5, 7, 9, 16, 18, 20, 25mm and 1/8", 3/16", 1/4", 5/16", 3/8", 1/2", 5/8").
- Detail specification & ORDER No. shown on page U2 collet.



- Tool cabinet stand U2-C, 900x500x400mm G.W.:40kgs CODE NO. 1022-015



WEIGHT: 2kg



CODE NO. 1022-010 U2-E
END mill grinding attachment



WEIGHT: 0.9kg

CODE NO. 1022-011 U2-T
Twist drill grinding attachment



WEIGHT: 0.9kg

CODE NO. 1022-012 U2-L
Lathe tool grinding attachment



U2-D
WEIGHT: 0.7kg
1022-013



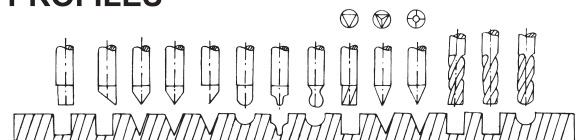
U2-R
WEIGHT: 0.5kg
1022-017

CODE NO. 1022-013
diamond grinding wheel
CODE NO. 1022-017
Resinoid Diamond & CBN Wheels

DIAMOND GRINDING WHEEL

ORDER NO.	SIZE	GRAIN
U2-D	100Dx10Wx5Ux20Hx22T	#100
U2-R	100Dx8Wx2Xx20H	#200
U2-R-1	100Dx8Wx2Xx20H	#400

ENGRAVING AND MILLING CUTTER PROFILES





Chamfering & Deburring Unit


VERTEX®


VCF-500

Accessory: Side Mill Cutter Insert SPUN 422

SPMN 1203



PRACTICAL

- A. UNIVERSAL APPLICATION.
- B. SIMPLIFIED OPERATION.
- C. FAST-ACCURATE-RATIONAL.
- D. TIME SAVED.



VCF-500W

Accessory: Grinding Wheel
100Øx50x17Ø



FEATURES FOR VCF-

1. Simplified operation, suitable for unskilled personnel.
2. Easily to be bevelled for any length made of steel, cast iron, nonferrous metals, plastics, acrylic etc.
3. 500 : With exchangeable carbide inserts, knife can be changed easily to decrease cost and increase working ability.
4. 500W: With taper wheel or flange hot-processed parts also can be bevelled or chamfered.
5. 500F : Working base on surface milling principles, the deburring processing surface is same as the milling machine surface.



VCF-500F

Accessory: Face Milling Cutter
Insert SEKN 1203



TECHNICAL DATA

	500	500W	500F
Space requirement	500x320m/m	500x440m/m	500x220m/m
Weight(kgs)	28.5	29.1	29
Voltage	3Ø 220V or 1Ø 110V/220V 50HZ/60HZ 3Ø 380V/415V		
Motor output	0.7KW		
Speed	3500 r.p.m		
Lenght of guide rails	500m/m	500m/m	500m/m
Height of bevel	0-3m/m		
Bevel angle	15°~45° (Changable)	45°	45°

PLEASE NOTIFY VOLTAGE & PHASE, WHEN YOU ORDERING.
C.E MARK REQUESTED



VCF-500S

Accessory: Sanding Disc
165Øx22Ø

ORDER NO.	CODE NO.
VCF-500S	1023-004
VCF-600	1023-005
VCF-700	1023-006

PRACTICAL

- A. USING SAND-CLOTH ROLLER FOR CUTTING.
- B. GOOD FOR STEEL. CAST IRON HARDEN PARTS.
- C. NOT FOR SOFT IRON OR ALUMINUM.
- D. IF USED BENT WORKPIECE, THE CHAMFERING SURFACE WOULD NOT SMOOTHLY STRAIGHT.



VCF-600

Insert SPMW 321
ZSPMW 090308

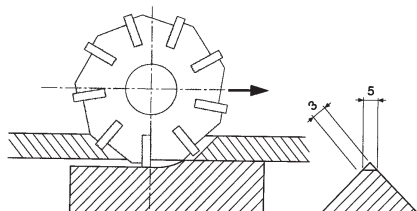
FEATURES FOR VCF-

- 500S: Uses sanding disc, can debur soft and rigid materials.
- 600 : Easy to carry and time-saving. suitable for heavy workpiece which can't be easily moved. The tools can be chamfered 0-3mm bevel angle, radius, arc angle, irregular shape. straight line, outer curve and etc.
- 700 : The machine is used to carry out chamfering operations on any kind of ferrous material in particular steel and cast iron. Equipped with square-shaped tungsten carbide inserts-12.7x12.7x3.18 ISO 1203 SPUN. Simplified operation suitable for unskilled personnel. 3Ø220V/3Ø380V



VCF-700

Side mill cutter



TECHNICAL DATA

	VCF-500S	VCF-600	VCF-700
Space requirement	330x410	380x130	360x200x260
Weight(kgs)	26	3.7	14
Voltage	3Ø220V or 1Ø110V/220V/3Ø380V/415V 50HZ/60HZ		
Motor output	0.7KW		0.37KW
Speed	3500 r.p.m	12000 r.p.m	3500 r.p.m
Lenght of guide rails	320m/m	100m/m	200m/m
Height of bevel	0-3m/m	0-3m/m	0-7m/m
Bevel angle	45°	45°	15°~45° Adjustable

PLEASE NOTIFY VOLTAGE & PHASE, WHEN YOU ORDERING.



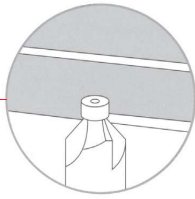
Chamfering & Deburring Unit

ORDER NO.VCF-300A CODE NO.1023-007



VERTEX

NEW



- Process by carbide end mill.
- The range of chamfer: inner dia. 6mm, inner gap width 6mm and 3R arc.
- The chamfer a bility by: 2C/2R.
- The adjustable speed (0-6000rpm) can use for all kinds of materials cutting. (except hardened parts)
- This machine was designed for regular and irregular parts such as curved surface, inner gap, and complex of inner and outer parts.
- All bevel angle comes to 45° by 45° carbide end mill.

SPECIFICATION

Accessory	Carbide end mills
Machine size	L330mm x W330mm x H300mm
Voltabe	1ø, 220V; 50Hz/60Hz
Speed	0~6000 r.p.m.
Distance of Bevel	0~3mm
Bevel angle	45°
N.W. / G.W.	30kgs / 34kgs
Box size	550mm x 440mm x 380mm
Motor	0.5HP
Track Size	300mm x 250mm x 10mm



Ejector Pin Cutting-off Unit

ORDER NO.VEC-100 CODE NO.1024-001

A PRECISE & SHARP CUTTING TOOL FOR MOULD MAKING LINE



Features

- Moveable shaft bearing easy operation, safety.
- For cutting ejector pin of mould. or machine key. round rod.
- Heat-Treatment materials.
Good-Looking cutting surface of stainless steel.
- Handle device according law of lever, it's easy to move on.
- Cause no vibration, no dust and noiseless.
- Easy to exchange the emery wheel.

ABLE TO CUT ALL THE MATERIAL WITH PLANE SURFACE ALMOST

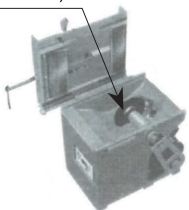
SPECIFICATION

Unit:mm

MAX. CUTTING CAPACITY	Ø25x300L
CUTTING TOLERANCE	20 ± 0.10MM
EMERY WHEEL	150MM (O.D.)
	1MM (THICK)
	19.05MM (HOLE)
R.P.M	3600
MOTOR	1/2HP
MEASURE RULE	300MM
WEIGHT (APPROX.)	94.5KGS
MACHINE SIZE	620x420x450MM
PACKING SIZE	720x520x600MM

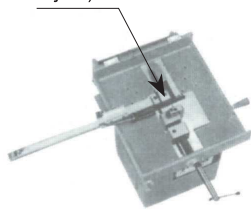
STANDARD ACCESSORIES

Emery wheel (Ø150x1x 19.05mm) 5 PCS



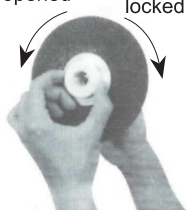
LARGE & SMALL V SLOT

(For clamping round object)



EMERY WHEEL ASSEMBLY BY HAND

opened locked tightly



PLEASE NOTIFY THE VOLTAGE & PHASE, WHEN YOU ORDERING.



ORDER NO.	CODE NO.
VEC-300G	1024-010
VEC-500G	1024-011
VEC-600G	1024-012

Features

- During operation, the grinding sander may be micro adjusted and repaired without changing its dimensions.
- The tightness of belt may be automatically adjusted and controlled (the larger the resistance, the tighter the belt.)
- The dimensions precision of cutting off the length of working piece are not subject to the effect of the difference of thickness of cutting-off sander piece.
- The rapid chuck is used to hold the working piece in place, opening or closing it is very quick, and Ø1-25mm is the same.
- When operation, a shaft with two tapered ends is used for transmission and characterized by high stability low wearing rate and long life.
- The rapid positioning rule is in the unit of 20mm and provided with a micro rule (0mm to 25mm) of which the zeroing point is the dimensions at the rapid positioning point.
- The minimum of cutting length is 60mm



For Clamping



For Cutting & Grinding

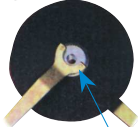
1.



2.



3.



4.



6.



The measure rule

SPECIFICATION

Cut-off precision	25m/mø x 300m/m ± 0.01
Right-angle precision	25m/mø x 90° ±0.01
Cut-off sander lamina	1m/m t x 180m/mø (Hole) 31.8m/mø
Grinding sander	WA46K x100 x 50 x 20
R.P.M.	3600
Motor	3/4HP 110/220V 1 or 3 phase
Capacity	VEC-300G 300mm VEC-500G 500mm VEC-600G 600MM
Weight (Approx.)	105.5kgs (107kgs) (110kgs)
Machine Size	L430m/m x W360m/m x H500m/m

- The length of measure: 300mm is for VEC-300G
500mm is for VEC-500G
600mm is for VEC-600G
Except the measure rule length is different, all items of body are same.
- Please notify the voltage & phase, when you ordering



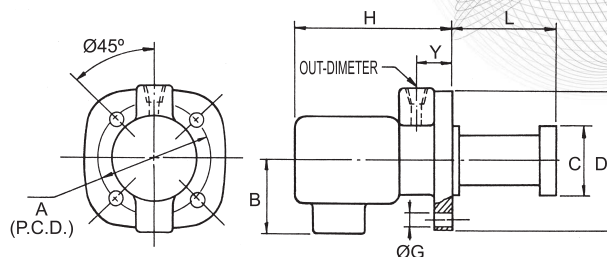
1/8 HP. Under Water Coolant Pump



VERTEX®

Features

This is the pump in best quality with anti-rust treatment, use high grade material for the complete set and has been duly inspected in five steps by precision electron device.



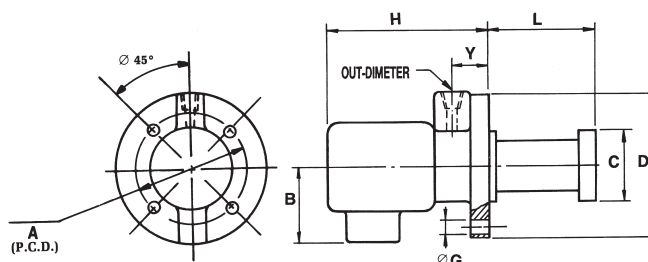
Unit:mm

POWER	A	B	C	D	G	H	Y	OUT-DIMETER	ORDER NO.	TYPE	POWER	L m/m	PUMPING WATER		WEIGHT (kg)	CODE NO.
													1 m/min	2 m/min		
1/8 HP	128±0.2	105	Ø92	Ø155	Ø8	160	19	PT 3/8	VWP-0810	UNDER WATER	1/8 HP	100	27ℓ-28ℓ	25ℓ-26ℓ	5.5	1026-001
									VWP-0813			130			5.6	1026-002
									VWP-0815			150			5.9	1026-003
									VWP-0818			180			6	1026-004

Unit:mm



1/4 HP. Under Water Coolant Pump



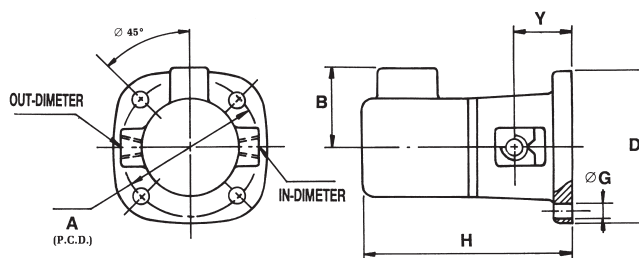
Unit:mm

POWER	A	B	C	D	G	H	Y	OUT-DIMETER	ORDER NO.	TYPE	POWER	L m/m	PUMPING WATER		WEIGHT (kg)	CODE NO.
													1 m/min	2 m/min		
1/4 HP	158±0.2	125	Ø122	Ø180	Ø8	180	26	PT 1/2	VWP-0415	UNDER WATER	1/4 HP	160	74ℓ-76ℓ	71ℓ-72ℓ	11.1	1026-010
									VWP-0418			180			11.3	1026-011
									VWP-0420			200			11	1026-012
									VWP-0424			240			12.5	1026-013
									VWP-0427			270			13	1026-014

Unit:mm



Self Priming Coolant Pump 1/8 HP. 1/4 HP



Unit:mm

POWER	A	B	D	G	H	Y	IN-DIMETER	OUT-DIMETER	ORDER NO.	TYPE	POWER	PUMPING WATER		WEIGHT (kg)	CODE NO.
												1 m/min	2 m/min		
1/8 HP	140±0.2	105	165	Ø8	195	50±0.5	PT 3/8	PT 3/8	VWP-089	SELF PRIMING	1/8 HP	26ℓ-27ℓ	24ℓ-25ℓ	5.9	1026-020
1/4 HP	185±0.2	125	225	Ø8	240	65±0.5	PT 1/2	PT 1/2	VWP-049		1/4 HP	73ℓ-75ℓ	70ℓ-71ℓ	11.6	1026-021

Unit:mm



Coolant Pump Kits



VERTEX®

1/8 HP & 1/4 HP



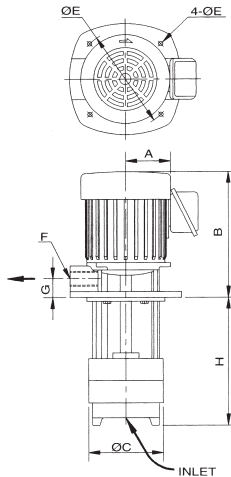
SET INCLUDING

- Coolant pump
- Coolant tank
- Connecting cable (w/plug for 1 ph)
- Coolant hose kit w/magnetic base
- Flexible conveying hose
- Drain hose
- Tool kits
- ON/OFF switch (for 1ph)

ITEM	ORDER NO.	VWP-81-150K	VWP-41-180K
Coolant pump (HPxH)		1/8 HP x 150mm	1/4 HP x 180mm
Tank size (LxWxH)		350x250x185mm	500x350x200mm
Volume of coolant tank		16ℓ	35ℓ
Connecting cable		2000mm	2000mm
Coolant hose kits w/magnetic base (ØxL)		1/4" x 330mm	3/8" x 360mm
Flexible conveying hose (ØxL)		3/8" x 1500mm	3/8" x 1500mm
Drain hose (ØxL)		1" x 300mm	1-1/4" x 400mm
Weight(kgs)		10.8	33
CODE NO.		1026-030	1026-031



Under Water Type Multi-stage High Pressure Coolant Pump



Special Features

- Discharge available in either N.P.T / P.T.
- Heavy duty bearings greased for long life and easy maintenance.
- Multi-stages., up to 6 stages for pressure over 9kg/cm² staggered discharge ports equalize radial loads for increasing pump life.
- Stainless steel made enclosed impeller., increasing pump efficiency and flow volumn.
- Rigid and strong one-piece shaft.

SPECIFICATION

ORDER NO.	STAGE	HP	A	B	C	D	E	F	G	H	PRESSURE kg/cm ² (PSI)	VOLUMETRIC DELIVERY (ℓ/min)		DELIVERY HEAD (m)	WEIGHT (kg)	CODE NO.
												EMULSION	COOLING OIL			
VWP-MS2-180	2	3/4	135	255	135	9	170	3/4" or 1" (option)	28	180	3 (42)	140	116	30	15	1026-040
VWP-MS2-250										250					15.5	1026-041
VWP-MS3-200	3	1	135	275	135	9	170	3/4" or 1" (option)	28	200	4.5 (64)	140	116	45	16	1026-042
VWP-MS3-250										250					17	1026-043
VWP-MS4-230	4	1 1/4	135	275	135	9	170	3/4" or 1" (option)	28	230	6 (85)	140	116	60	18	1026-044
VWP-MS4-180										180					19	1026-045
VWP-MS5-210	5	1 1/2	135	275	135	9	170	3/4" or 1" (option)	28	210	7.5 (106)	140	116	75	20	1026-046